



INDUSTRIAL BOLTING SYSTEMS AND TORQUE TOOLS

HELP GREEN
ENERGY

Xianheng International Science & Technology Co., Ltd.

Xianheng Technology Building, No. 101 Xinghuang Lane, Dongxin Street,
Gongshu District, Hangzhou, 310022, China.

Tel: +86-571-88322170

Fax: +86-571-88865359

E-mail: exp@xianhengguoji.com



202603

www.betetool.com

Enterprise Introduction

Xianheng International Science&Technology Co., Ltd. public listing on the main board of Shanghai Stock Exchange, is a MRO intensive supplier of tools, instruments with several factories of our own producing different kinds of products. It mainly serves the power industry, and also involves emergency, railway, urban rail transit, petroleum and petrochemical, etc.

Through fast development and professional capability, our factory Hangzhou Bete Equipment Manufacture Co., Ltd.(wholly owned subsidiary) is rated as National High-tech Enterprise, Zhejiang Excellent and Innovative Enterprise, and also passed ISO9001:2015 certification, CE certificate and over 70 Letters of Patent. Every link including product research and development, manufacture, debugging, and technical support follows strict and scientific management principles.

Continuous efforts contribute a lot to our good reputation and wide acceptance from the market. In recent years, we have established a long-term and win-win cooperation with customers from America, Europe, Southeast Asia, Africa and Middle East. Welcome to our company to create a good business relationship in near future.

"Market-oriented, quality-survival, innovation-oriented development, service as the purpose", we wholeheartedly provide you with quality products and intimate services! Warmly welcome friends at home and abroad to visit our company!



Xianheng International



HEAD QUARTER

INDUSTRIAL PARK



FULL

No.1 Quality electric construction tools in China



Trustworthy public listed company in Shanghai Stock Exchange



Life-time after-sales service



CONTENTS

01

Hydraulic Torque Wrench

- [1] MXTA Series of Driving Type Hydraulic Torque Wrench
- [2] MXTA-wrench pressure & Torque -comparison table
- [4] Drive-type Hydraulic Torque Wrench - MINI Series
- [5] Special Sockets for Mxta Series of Driving Type Hydraulic Torque Wrench (Cr-mo Sockets)
- [6] LOW Series of Hollow Hydraulic Torque Wrench
- [7] LOW- wrench pressure & Torque -comparison table
- [9] Ultra-Thin Hollow-Type Hydraulic Torque Wrench - LOW-CP Series
- [10] LOW Working Head Series Hollow Hydraulic Torque Wrench Working Head
- [12] Lithium Battery Charging Series
- [13] Pneumatic High-Speed Torque Wrench
- [14] Wind Power Electric Torque Wrench
- [14] Smart Socket Series
- [15] Recommended Values Chart

02

Bolt Tensioner

- [17] Multi-stage Bolt Tensioner For Wind Power
- [18] Hydraulic Bolt Stretcher
- [19] Hydraulic Bolt Stretcher
- [20] Hydraulic Bolt Stretcher
- [21] Hydraulic Nut

03

Hydraulic Cylinder

- [22] Single-acting Ultra-thin Hydraulic Cylinder
- [23] Single-acting Low-height Hydraulic Cylinder
- [24] Single acting Hollow Hydraulic Cylinder
- [25] Single-Acting General Hydraulic Cylinder
- [27] Double-Acting Hydraulic Cylinder
- [29] Double-Acting Hollow Hydraulic Cylinder
- [30] Single-acting Aluminum Alloy Cylinder
- [31] Single-acting High-tonnage Locking Nut Hydraulic Cylinder
- [33] Single-acting Heavy-duty Hydraulic Cylinder
- [35] Single-acting High-tonnage Hydraulic Cylinder
- [37] Single-acting Low-profile Locking Hydraulic Cylinder
- [38] Ultra-high Pressure Single-acting Ultra-thin Hydraulic Cylinder
- [39] Double-acting High-tonnage Hydraulic Cylinder
- [41] Single-acting Low-profile Locking Hydraulic Cylinder
- [43] Manual Claw-type Hydraulic Jack
- [44] Synchronized Lifting

04

Hydraulic Puller

- [46] Three Jaws Hydraulic Puller
- [46] Two Jaws Hydraulic Puller
- [46] Pulling Sets
- [47] Separated Three-jaw Hydraulic Puller
- [47] Separated Two-jaw Hydraulic Puller
- [47] Vehicle-mounted Hydraulic Puller

05

Flange Spreader

- [49] Hydraulic Flange Spreader-8t
- [49] Hydraulic Flange Spreader-14t
- [49] Hydraulic Flange Spreader-15t
- [50] Split-type Flange Spreader-24t
- [51] Flange Straightener

06

Hydraulic Pump

- [52] Ultra-High Pressure Manual Pump
- [53] Special Electric Pump For Torque Wrench
- [53] Special Electric Hydraulic Pump For Bolt Stretcher
- [54] Air Pump For Torque Wrench
- [54] Intelligent Electric Hydraulic Tension Pump

MXTA Series of Driving Type Hydraulic Torque Wrench

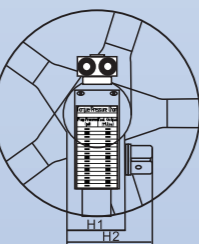
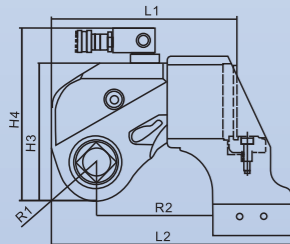
- ▲ Max working pressure up to 70Mpa, accuracy up to ±3%
- ▲ Full range models from 112Nm to 72000Nm which can cover all size bolts in the market
- ▲ Hose connector rotates 360° x180°, used without limited space
- ▲ Square driver connects with high strength sockets, bolts used for a wide range of applications
- ▲ The trigger type lock can place the 360° fine-tuning type reaction arm on any fixed fulcrum
- ▲ Aluminum and titanium alloy forming body, high strength, high toughness
- ▲ New type anti-loose joints to ensure the oil flows smoothly



70 Mpa

Aluminum and titanium alloy forming body

Carrying case made of PP plastic, integrated forming, resistant to pressure and fall



New type anti-loose joints

Optional double oil pipe with quick connector

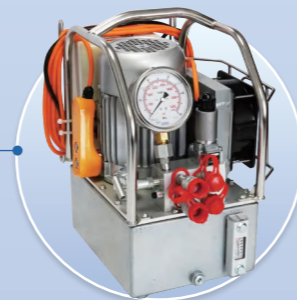


360°x180° hose connector

Trigger type lock

Square driver

Special electric pump for torque wrench
HEP-700



Model	Torque Range(N.m)	Bolt Spec.(M)	Weight(kg)	L1	L2	H1	H2	H3	H4	R1	R2	Drive Shaft
07 MXTA	112-1120	14-30	1.8	110.8	139.3	42	65.8	76.2	108.1	20.5	68.3	¾"
1 MXTA	183-1837	16-36	2	130	182	50	72	99	144	26	99	¾"
3 MXTA	451-4512	22-48	5	181	244	68	96	127	176	34	129	1"
5 MXTA	752-7528	27-56	9	218	286	80	125	149	199	39	158	1-½"
8 MXTA	1078-10780	30-64	12	230	312	90	138	167	216	47	171	1-½"
10 MXTA	1551-15516	36-72	16	253	343	100	146	182	231	51	174	1-½"
15 MXTA	2062-20627	39-80	22	286	396	110	182	200	250	55	222	2-½"
20 MXTA	2666-26664	42-90	28	320	451	120	197	220	269	59	250	2-½"
25 MXTA	3472-34725	48-100	31	314	464	137	200	255	295	67	251	2-½"
35 MXTA	4866-48666	64-120	45	355	489	153	217	290	330	79	271	2-½"
50 MXTA	7200-72000	72-125	85	386	516	161	223	307	352	81	259	2-½"

Notes: all kinds of special specifications of drive shafts, drive wheels and reaction arms can be customized.

MXTA- wrench pressure & Torque -comparison table

Model	07MXTA	1MXTA	3MXTA	5MXTA	8MXTA	10MXTA	15MXTA	20MXTA	25MXTA	35MXTA	50MXTA
mpa	N.m	N.m	N.m	N.m	N.m	N.m	N.m	N.m	N.m	N.m	N.m
7	112	183	451	752	1078	1551	2062	2666	3472	4866	7200
8	128	209	515	860	1232	1773	2356	3047	3968	5561	8229
9	144	236	580	967	1386	1994	2651	3428	4464	6256	9257
10	160	262	644	1075	1540	2216	2946	3809	4960	6952	10286
11	176	288	709	1178	1694	2438	3240	4190	5456	7647	11314
12	192	314	773	1290	1848	2659	3535	4571	5952	8342	12343
13	208	341	838	1397	2002	2881	3829	4952	6448	9037	13371
14	224	367	902	1505	2156	3103	4124	5332	6945	9733	14400
15	240	393	967	1612	2310	3324	4419	5713	7441	10428	15429
16	256	419	1031	1720	2464	3546	4713	6094	7937	11123	16457
17	272	446	1096	1828	2618	3768	5008	6475	8433	11818	17486
18	288	472	1160	1935	2772	3989	5302	6856	8929	12514	18514
19	304	498	1225	2043	2926	4211	5597	7237	9425	13209	19543
20	320	524	1289	2150	3080	4433	5891	7618	9921	13904	20571
21	336	551	1353	2258	3234	4654	6186	7999	10417	14599	21600
22	352	577	1418	2365	3388	4876	6481	8380	10913	15295	22629
23	368	603	1482	2473	3542	5098	6775	8761	11409	15990	23657
24	384	629	1547	2580	3696	5319	7070	9142	11905	16685	24686
25	400	656	1611	2688	3850	5541	7364	9523	12401	17380	25714
26	416	682	1676	2796	4004	5763	7659	9903	12898	18076	26743
27	432	708	1740	2903	4158	5984	7953	10284	13394	18771	27771
28	448	734	1805	3011	4312	6206	8248	10665	13890	19466	28800
29	464	761	1869	3118	4466	6428	8543	11046	14386	20161	29829
30	480	787	1934	3226	4620	6649	8837	11427	14882	20856	30857
31	496	813	1998	3333	4774	6871	9132	11808	15378	21552	31886
32	512	839	2063	3441	4928	7093	9426	12189	15874	22247	32914
33	528	866	2127	3548	5082	7314	9721	12570	16370	22942	33943
34	544	892	2191	3656	5236	7536	10015	12951	16866	23637	34971
35	560	918	2256	3764	5390	7758	10310	13332	17362	24333	36000
36	576	944	2320	3871	5544	7979	10605	13713	17858	25028	37029
37	592	971	2385	3979	5698	8201	10899	14094	18354	25723	38057
38	608	997	2449	4086	5852	8423	11194	14475	18850	26418	39086
39	624	1023	2514	4194	6006	8644	11488	14855	19347	27114	40114
40	640	1049	2578	4301	6160	8866	11783	15236	19843	27809	41143
41	656	1076	2634	4409	6314	9088	12077	15617	20339	28504	42171
42	672	1102	2707	4516	6468	9309	12372	15998	20835	29199	43200
43	688	1128	2772	4624	6622	9531	12667	16379	21331	29895	44229
44	704	1154	2836	4732	6776	9753	12961	16760	21827	30590	45257
45	720	1181	2900	4839	6930	9974	13256	17141	22323	31285	46286
46	736	1207	2965	4947	7084	10196	13550	17522	22819	31980	47314
47	752	1233	3029	5054	7238	10418	13845	17903	23315	32676	48343
48	768	1259	3094	5162	7392	10639	14139	18284	23811	33371	49371
49	784	1286	3158	5269	7546	10861	14434	18665	24307	34066	50400
50	800	1312	3223	5377	7700	11083	14729	19046	24803	34761	51429
51	816	1338	3287	5484	7854	11304	15023	19427	25299	35456	52457
52	832	1364	3352	5592	8008	11526	15318	19807	25796	36152	53486
53	848	1391	3416	5700	8162	11748	15612	20188	26292	36847	54514
54	864	1417	3481	5807	8316	11969	15907	20569	26788	37542	55543
55	880	1443	3545	5915	8470	12191	16201	20950	27284	38237	56571
56	896	1469	3610	6022	8624	12413	16496	21331	27780	38933	57600
57	912	1496	3674	6130	8778	12634	16791	21712	28276	39628	58629
58	928	1522	3738	6237	8932	12856	17085	22093	28772	40323	59657
59	944	1548	3803	6345	9086	13078	17380	22474	29268	41018	60686
60	960	1574	3867	6452	9240	13299	17674	22855	29764	41714	61714
61	976	1601	3932	6560	9394	13521	17969	23236	30260	42409	62743
62	992	1627	3996	6668	9548	13743	18263	23617	30756	43104	63771
63	1008	1653	4061	6775	9702	13964	18558	23998	31252	43799	64800
64	1024	1679	4125	6883	9856	14186	18853	24378	31749	44495	65829
65	1040	1706	4190	6990	10010	14408	19147	24759	32245	45190	66857
66	1056	1732	4254	7098	10164	14629	19442	25140	32741	45885	67886
67	1072	1758	4319	7205	10318	14851	19736	25521	33237	46580	68914
68	1088	1784	4383	7313	10472	15073	20031	25902	33733	47276	69943
69	1104	1811	4448	7420	10626	15294	20325	26283	34229	47971	70971
70	1120	1837	4512	7528	10780	15516	20627	26664	34725	48666	72000

MXTA- wrench pressure & Torque -comparison table

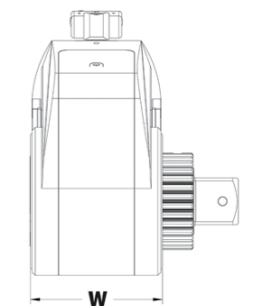
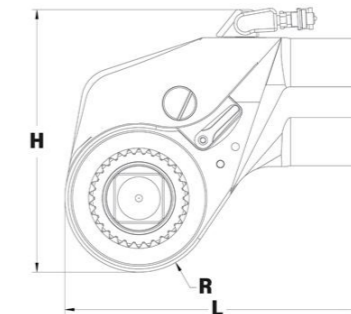
Model	07MXTA	1MXTA	3MXTA	5MXTA	8MXTA	10MXTA	20MXTA	25MXTA	35MXTA	50MXTA
psi	ft.lbs	ft.lbs	ft.lbs	ft.lbs	ft.lbs	ft.lbs	ft.lbs	ft.lbs	ft.lbs	ft.lbs
1000	81	134	328	547	783	1127	1937	2523	3535	5230
1200	97	161	394	656	940	1352	2324	3028	4242	6276
1400	111	188	459	766	1096	1578	2712	3532	4949	7322
1600	130	215	525	875	1253	1803	3099	4037	5656	8368
1800	146	242	590	985	1409	2029	3487	4541	6363	9414
2000	162	268	656	1094	1566	2254	3874	5046	7070	10460
2200	179	295	721	1203	1723	2480	4261	5550	7777	11506
2400	195	322	787	1313	1879	2705	4649	6055	8485	12552
2600	211	349	852	1422	2036	2931	5036	6559	9192	13598
2800	228	376	918	1532	2193	3156	5424	7064	9899	14644
3000	244	403	984	1641	2349	3381	5811	7568	10606	15690
3200	260	430	1049	1750	2506	3607	6198	8073	11313	16736
3400	276	457	1115	1860	2662	3832	6586	8577	12020	17782
3600	293	483	1180	1969	2819	4058	6973	9082	12727	18828
3800	309	510	1246	2079	2976	4283	7361	9586	13434	19874
4000	325	537	1311	2188	3132	4509	7748	10091	14141	20920
4200	341	564	1377	2297	3289	4734	8135	10595	14848	21966
4400	358	591	1443	2407	3446	4959	8523	11100	15555	23012
4600	374	618	1508	2516	3602	5185	8910	11604	16262	24058
4800	390	645	1574	2626	3759	5410	9298	12109	16970	25104
5000	407	672	1639	2735	3915	5636	9685	12613	17677	26150
5200	423	698	1705	2844	4072	5861	10072	13118	18384	27196
5400	439	725	1770	2954	4229	6087	10460	13622	19091	28242
5600	455	752	1836	3063	4385	6312	10847	14127	19798	29288
5800	472	779	1901	3173	4542	6538	11235	14631	20505	30334
6000	488	806	1967	3282	4699	6763	11622	15136	21212	31380
6200	504	833	2033	3391	4855	6988	12009	15641	21919	32426
6400	521	860	2098	3501	5012	7214	12397	16145	22626	33472
6600	537	887	2164	3610	5168	7439	12781	16650	23333	34518
6800	553	914	2229	3720	5325	7665	13172	17154	24040	35564
7000	569	940	2295	3829	5482	7890	13559	17659	24747	36610
7200	586	967	2360	3938	5638	8116	13946	18163	25454	37656
7400	602	994	2426	4048	5795	8341	14334	18668	26162	38702
7600	618	1021	2491	4157	5951	8567	14721	19172	26869	39748
7800	635	1048	2557	4267	6108	8792	15109	19677	27576	40794
8000	651	1075	2623	4376	6265	9017	15496	20181	28283	41840
8200	667	1102	2688	4485	6421	9243	15883	20686	28990	42886
8400	683	1129	2754	4595	6578	9468	16271	21190	29697	43932
8600	700	1155	2819	4704	6735	9694	16658	21695	30404	44978
8800	716	1182	2885	4814	6891	9919	17046	22199	31111	46024
9000	732	1209	2950	4923	7048	10145	17433	22704	31818	47070
9200	748	1236	3016	5032	7204	10370	17820	23208	32525	48116
9400	765	1263	3082	5142	7361	10595	18208	23713	33232	49162
9600	781	1290	3147	5251	7518	10821	18595	24217	33939	50208
9800	797	1317	3213	5361	7674	11046	18983	24722	34647	51254
10000	811	1344	3278	5470	7831	11272	19370	25226	35354	52300

Drive-Type Hydraulic Torque Wrench - MINI Series

- ▲ Accuracy: ±3%
- ▲ One-piece fuselage made of aluminum-iron alloy, featuring light weight, high strength and high toughness
- ▲ Front-mounted reaction arm design: with a small longitudinal dimension, it is more suitable for narrow spaces
- ▲ The reaction arm is positioned at the square drive of the drive shaft, eliminating eccentric load
- ▲ 360°×180° rotating oil pipe joint, allowing unrestricted use regardless of space conditions
- ▲ Customizable force arm according to customers' actual needs



70 Mpa



Model	Torque Value (N-m)	Nut Size (M)	H (mm)	W (mm)	L (mm)	R (mm)	Weight (kg)	Drive Shaft
MINI-07	104-1040	14-27	106.9	45.3	105.2	25	1.4	3/4 "
MINI-1	174-1741	18-36	124.9	55.2	127.9	28.6	2.0	3/4 "
MINI-3	402-4025	24-48	160.2	73.7	165.9	38.1	4.3	1 "
MINI-5	726-7267	30-56	188.2	85.9	119.5	47.2	7.1	1-1/2 "
MINI-8	1052-10521	36-64	212.7	98	224.2	52.5	9.4	1-1/2 "
MINI-10	1592-15921	42-72	236	110.5	252	60.3	13.3	1-1/2 "

LOW- wrench pressure & Torque -comparison table

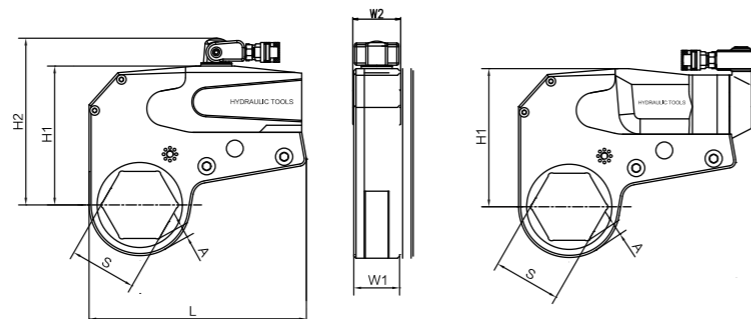
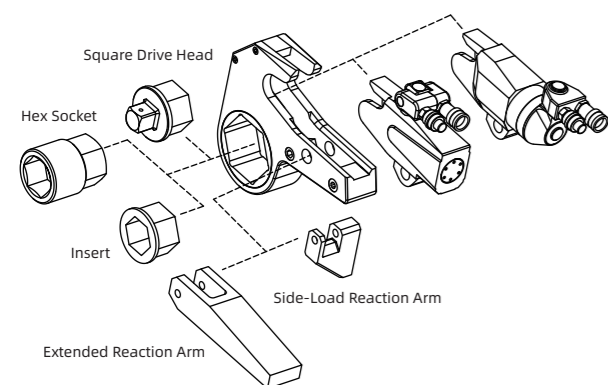
Model	2LOW		4LOW		8LOW		14LOW	18LOW	30LOW	
A/F(mm)	19-55	60	34-65	70-80	41-95	100-105	50-117	65-130	110-155	150-175
Mpa	N.m	N.m	N.m	N.m	N.m	N.m	N.m	N.m	N.m	N.m
7	232	241	585	647	1094	1177	1852	2695	4188	4459
8	265	275	669	739	1250	1345	2117	3081	4786	5096
9	299	310	752	832	1407	1513	2381	3466	5385	5733
10	332	344	836	924	1563	1682	2646	3851	5983	6370
11	365	379	920	1017	1719	1850	2910	4236	6581	7007
12	398	413	1003	1109	1876	2018	3175	4621	7180	7644
13	432	448	1087	1202	2032	2186	3440	5006	7778	8281
14	465	482	1171	1294	2188	2354	3704	5392	8376	8918
15	498	517	1255	1387	2344	2523	3969	5777	8975	9555
16	531	551	1338	1479	2501	2691	4233	6162	9573	10192
17	565	586	1422	1572	2657	2859	4498	6547	10171	10829
18	598	620	1506	1664	2813	3027	4762	6932	10769	11467
19	631	655	1589	1757	2970	3195	5027	7317	11368	12104
20	665	689	1673	1849	3126	3364	5292	7702	11966	12741
21	698	724	1757	1942	3282	3532	5556	8087	12564	13378
22	731	758	1840	2034	3439	3700	5821	8473	13163	14015
23	764	793	1924	2127	3595	3868	6085	8858	13761	14652
24	798	827	2008	2219	3751	4037	6350	9243	14359	15289
25	831	862	2092	2312	3907	4205	6615	9628	14958	15926
26	864	896	2175	2404	4064	4373	6879	10013	15556	16563
27	897	931	2259	2497	4220	4541	7144	10398	16154	17200
28	931	965	2343	2589	4376	4709	7408	10783	16753	17837
29	964	1000	2426	2682	4533	4878	7673	11168	17351	18474
30	997	1034	2510	2774	4689	5046	7938	11553	17949	19111
31	1030	1069	2594	2867	4845	5214	8202	11939	18548	19748
32	1064	1103	2677	2959	5002	5382	8467	12324	19146	20385
33	1097	1138	2761	3052	5158	5550	8731	12709	19744	21022
34	1130	1172	2845	3144	5314	5719	8996	13094	20343	21659
36	1164	1207	2929	3237	5470	5887	9260	13864	20941	22296
36	1197	1241	3012	3329	5627	6055	9525	13864	21539	22933
37	1230	1276	3096	3422	5783	6223	9790	14249	22138	23570
38	1263	1310	3180	3514	5939	6391	10054	14634	22736	24207
39	1297	1345	3263	3607	6096	6560	10319	15019	23334	24845
40	1330	1379	3347	3699	6252	6728	10583	15405	23932	25482
41	1363	1414	3431	3792	6408	6896	10848	15790	24531	26119
42	1396	1448	3514	3884	6565	7064	11113	16175	25129	26756
43	1430	1483	3598	3977	6721	7232	11377	16560	25727	27393
44	1463	1517	3682	4069	6877	7401	11642	16945	26326	28030
45	1496	1552	3766	4162	7033	7569	11906	17330	26924	28667
46	1530	1586	3849	4254	7190	7737	12171	17715	27522	29304
47	1563	1621	3933	4347	7346	7905	12436	18100	28121	29941
48	1596	1655	4017	4439	7502	8073	12700	18485	28719	30578
49	1629	1690	4100	4532	7659	8242	12965	18871	29317	31215
50	1663	1724	4184	4624	7815	8410	13229	19256	29916	31852
51	1696	1759	4268	4717	7971	8578	13494	19641	30514	32489
52	1729	1793	4351	4809	8128	8746	13758	20026	31112	33126
53	1762	1828	4435	4902	8284	8914	14023	20411	31711	33763
54	1796	1862	4519	4994	8440	9083	14288	20796	32309	34400
55	1829	1897	4603	5087	8596	9251	14552	21181	32907	35037
56	1862	1931	4686	5179	8753	9419	14817	21566	33506	35674
57	1895	1966	4770	5272	8909	9587	15081	21952	34104	36311
58	1929	2000	4854	5364	9065	9756	15346	22337	34702	36948
59	1962	2035	4937	5457	9222	9924	15611	22722	35301	37585
60	1995	2069	5021	5549	9378	10092	15875	23107	35899	38223
61	2029	2104	5105	5642	9534	10260	16140	23492	36497	38860
62	2062	2138	5188	5734	9691	10428	16404	23877	37095	39497
63	2095	2173	5272	5827	9847	10597	16669	24262	37694	40134
64	2128	2207	5356	5919	10003	10765	16933	24647	38292	40771
65	2162	2242	5440	6012	10169	10933	17198	25032	38890	41408
66	2195	2276	5523	6104	10335	11101	17463	25418	39489	42045
67	2228	2311	5607	6197	10501	11269	17797	25803	40087	42682
68	2261	2345	5691	6289	10672	11438	17992	26188	40685	43319
69	2295	2380	5774	6382	10845	11606	18256	26573	41284	43956
70	2328	2414	5858	6474	10941	11774	18521	26958	41882	44593

LOW- wrench pressure & Torque -comparison table

Model	2LOW		4LOW		8LOW		14LOW	18LOW	30LOW	
A/F(mm)	19-55	60	34-65	70-80	41-95	100-105	50-117	65-130	110-155	160-175
psi	ft.lbs	ft.lbs	ft.lbs	ft.lbs	ft.lbs	ft.lbs	ft.lbs	ft.lbs	ft.lbs	ft.lbs
1000	169	175	426	470	795	855	1346	1988	3043	3240
1200	203	210	511	564	954	1026	1615	2386	3652	3888
1400	237	245	596	658	1113	1197	1884	2784	4260	4536
1600	270	280	681	752	1272	1368	2153	3181	4869	5184
1800	304	315	766	846	1431	1539	2422	3579	5477	5832
2000	338	350	852	940	1590	1710	2692	3977	6086	6480
2200	372	385	937	1034	1749	1881	2961	4374	6694	7127
2400	406	421	1022	1128	1908	2052	3230	4772	7303	7775
2600	440	456	1107	1222	2067	2223	3499	5170	7911	8423
2800	473	491	1192	1317	2226	2395	3768	5568	8520	9071
3000	507	526	1277	1411	2385	2566	4037	5965	9128	9719
3200	541	561	1362	1505	2544	2737	4306	6363	9737	10367
3400	575	596	1447	1599	2703	2908	4575	6760	10345	11015
3600	609	631	1533	1693	2861	3079	4844	7158	10954	11663
3800	642	666	1618	1787	3020	3250	5113	7556	11562	12311
4000	676	701	1703	1881	3179	3421	5383	7954	12171	12959
4200	710	736	1788	1975	3338	3592	5652	8351	12779	13606
4400	744	771	1873	2069	3497	3763	5921	8749	13388	14254
4600	778	806	1958	2163	3656	3934	6190	9147	13996	14902
4800	812	842	2043	2257	3815	4105	6459	9544	14605	15550
5000	845	877	2128	2351	3974	4276	6728	9942	15213	16198
5200	879	912	2214	2445	4133	4447	6997	10340	15822	16846
5400	913	947	2299	2539	4292	4618	7266	10737	16430	17494
5600	947	982	2384	2633	4451	4789	7535	11135	17039	18142
5800	981	1017	2469	2727	4610	4960	7804	11533	17647	18790
6000	1015	1052	2554	2822	4769	5132	8074	11930	18256	19438
6200	1048	1087	2639	2916	4928	5303	8343	12328	18865	20085
6400	1082	1122	2724	3010	5087	5474	8612	12726	19473	20733
6600	1116	1157	2809	3104	5246	5645	8881	13123	20082	21381
6800	1150	1192	2894	3198	5405	5816	9150	13521	20690	22029
7000	1184	1227	2980	3292	5564	5987	9419	13919	21299	22677
7200	1217	1262	3065	3386	5723	6158	9688	14317	21907	23325
7400	1251	1298	3150	3480	5882	6329	9957	14714	22516	23973
7600	1285	1333	3235	3574	6041	6500	10226	15112	23124	24621
7800	1319	1368	3320	3668	6200	6671	10495	15509	23733	25269
8000	1353	1403	3405	3762	6359	6842	10765	15907	24341	25917
8200	1387	1438	3490	3856	6518	7013	11034	16305	24950	26564
8400	1420	1473	3575	3950	6677	7184	11303	16703	25558	27212
8600	1454	1508	3661	4044	6835	7355	11572	17100	26167	27860
8800	1488	1543	3746	4138	6994	7526	11841	17498	26775	28508
9000	1522	1578	3831	4232	7153	7697	12110	17895	27384	29156
9200	1556	1613	3916	4326	7312	7868	12379	18293	27992	29804
9400	1589	1648	4001	4421	7471	8040	12648	18691	28601	30452
9600	1623	1683	4086	4515	7630	8211	12917	19089	29209	31100
9800	1657	1719	4171	4609	7789	8382	13186	19486	29818	31748
10000	1691	1754</								

Ultra-Thin Hollow-Type Hydraulic Torque Wrench - LOW-CP Series

- ▲ High torque, lighter weight, and low-profile design
- ▲ Double-acting, high-speed, and large rotation angle
- ▲ Compatible with multiple replaceable working heads (optional)
- ▲ 360° rotating hose connector, suitable for compact spaces and easy positioning
- ▲ Torque range: 232-44,593 N·m; torque accuracy up to ±3%
- ▲ The wrench components are fully designed for high strength, with an integral reaction arm. It features no space restrictions during use, and is durable and reliable
- ▲ Expandable metric and imperial hex inserts and sockets
- ▲ Maximizes the use of high-strength lightweight metals
- ▲ Customized design available for special requirements



Model	Torque Value (N·m)	Nut Opposite Side (mm)	L (mm)	H1 (mm)	H2 (mm)	W1 (mm)	W2 (mm)	Power Head Weight (kg)	Working Head Weight (kg)
2LOW-CP	232-2328	19-55	196	102	126	32	66	1.2	1.6
	241-2414	60	196	105	129	32	66	1.2	1.7
3LOW-CP	475-3327	46-60	196	113	201	38	77	1.5	2.2
4LOW-CP	585-2510	34-36	245	136	177	42	77	2.3	4.4
	585-5021	41	245	136	177	42	77	2.3	4.4
	585-5858	41-65	246	146	187	42	77	2.3	4.6
8LOW-CP	647-6474	70-80	246	146	187	42	77	2.3	4.6
	1094-10941	41-95	300	169	207	53	77	3.3	8
14LOW-CP	1177-11774	100-105	301	179	216	53	77	3.3	8.4
	1852-18521	50-115	361	204	239	64	99	5.5	11.5
18LOW-CP	2695-26958	65-130	388	231	264	71	109	6.5	14.3
32LOW-CP	4188-41882	110-155	430	272	303	85	131	11.5	29
	4459-44593	160-175	441	285	315	85	131	11.5	30

LOW Working Head Series Hollow Hydraulic Torque Wrench Working Head

Each type of LOW hollow torque wrench power has a set of working head corresponding to it, they cover this type of power head that can provide all sizes of bolts within the torque range. When selecting the appropriate working head for the bolt, note that the distance between the bolt and the wall is greater than the distance between the hexagonal edge of the working head and the outer edge of the working head. Pay special attention to whether there is enough space between bolt and bolt. The R and A in the following table can help you choose the right head.



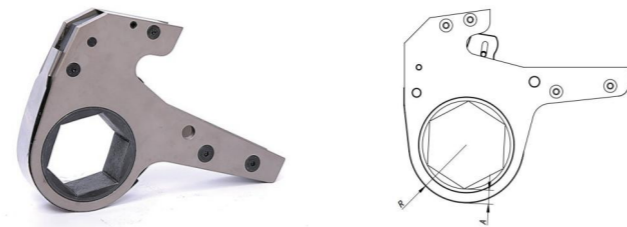
Interchangeable reducer
Interchangeable reducer cooperates with LOW series working head, so that a single working head can match multiple bolt size, which can greatly improve the adaptability of different conditions.

Standard working head selection table of hollow torque wrench

Bolt Dia. mm	A/F mm	2LOW-CP		3LOW-CP		4LOW-CP		8LOW-CP		14LOW-CP		18LOW-CP		30LOW-CP	
		R(mm)	A(mm)	R(mm)	A(mm)	R(mm)	A(mm)	R(mm)	A(mm)	R(mm)	A(mm)	R(mm)	A(mm)	R(mm)	A(mm)
12	19	27	16												
14	22	27	14												
18	27	27	11												
	30	29	12												
20	32	29	11												
22	34	31	11			36	16								
24	36	31	10			36	15								
27	41	34	10			39	15	46	22						
30	46	37	10	38	11	42	15	46	19						
33	50	40	11	42	13	44	15	46	17	60	31				
36	55	43	11	42	10	46	14	50	18	60	28				
39	60	46	11	46	12	50	15	52	17	60	25				
42	65					53	15	55	17	60	22	62	23		
45	70					56	15	58	17	60	19	65	23		
48	75					59	15	60	17	63	19	67	22		
52	80					61	15	63	16	66	19	70	22		
56	85							66	16	69	19	72	23		
60	90							69	17	72	20	74	22		
64	95							71	16	74	19	77	23		
68	100							75	17	77	19	79	22		
72	105							78	17	80	19	82	23		
76	110									83	19	84	22	89	25
80	115									87	20	89	24	95	28
85	120											92	23	95	25
	125											95	23	101	29
90	130											98	23	101	26
95	135													104	26
	140													110	29
100	145													110	26
105	150													116	29
110	155													116	26
	160													128	36
115	165													128	33
120	170													128	30
	175													128	27

LOW Working Head Series Hollow Hydraulic Torque Wrench Working Head

Each type of LOW hollow torque wrench power has a set of working head corresponding to it, they cover this type of power head that can provide all sizes of bolts within the torque range. When selecting the appropriate working head for the bolt, note that the distance between the bolt and the wall is greater than the distance between the hexagonal edge of the working head and the outer edge of the working head. Pay special attention to whether there is enough space between bolt and bolt. The R and A in the following table can help you choose the right head.



Interchangeable reducer

Interchangeable reducer cooperates with LOW series working head, so that a single working head can match multiple bolt size, which can greatly improve the adaptability of different conditions.

Standard working head selection table of hollow torque wrench

Bolt Dia. mm	A/F mm	2HTW-UT		3HTW-UT		4HTW-UT		8HTW-UT		14HTW-UT		14HTW-UT		30HTW-UT	
		R(mm)	A(mm)	R(mm)	A(mm)	R(mm)	A(mm)	R(mm)	A(mm)	R(mm)	A(mm)	R(mm)	A(mm)	R(mm)	A(mm)
12	19	27	16												
14	22	27	14												
18	27	27	11												
	30	29	12												
20	32	29	11												
22	34	31	11			36	16								
24	36	31	10			36	15								
27	41	34	10			39	15	46	22						
30	46	37	10	38	11	42	15	46	19						
33	50	40	11	42	13	44	15	46	17	60	31				
36	55	43	11	42	10	46	14	50	18	60	28				
39	60	46	11	46	12	50	15	52	17	60	25				
42	65					53	15	55	17	60	22	62	23		
45	70					56	15	58	17	60	19	65	23		
48	75					59	15	60	17	63	19	67	22		
52	80					61	15	63	16	66	19	70	22		
56	85							66	16	69	19	72	23		
60	90							69	17	72	20	74	22		
64	95							71	16	74	19	77	23		
68	100							75	17	77	19	79	22		
72	105							78	17	80	19	82	23		
76	110									83	19	84	22	89	25
80	115									87	20	89	24	95	28
85	120											92	23	95	25
	125											95	23	101	29
90	130											98	23	101	26
95	135													104	26
	140													110	29
100	145													110	26
105	150													116	29
110	155													116	26
	160													128	36
115	165													128	33
120	170													128	30
	175													128	27

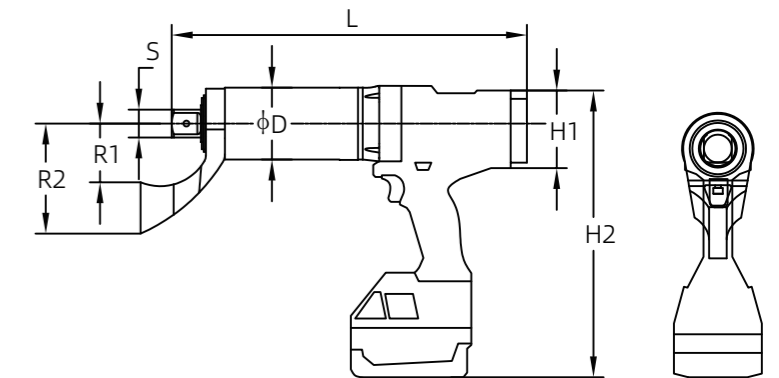
KEM Series Lithium Battery Charging Series



- ▲ High-power brushless DC motor, stable torque output
- ▲ Color LCD display, programmable torque, real-time torque & angle indication
- ▲ Torque range: 100-12000 N·m
- ▲ Torque accuracy: ±5%, repeatability: ±3%
- ▲ Intelligent control: data recording, abnormal torque alarm
- ▲ High-strength planetary gearbox, high torque, lightweight
- ▲ Automatic reaction arm release
- ▲ Optional Bluetooth & Wi-Fi, support smart socket connection
- ▲ Optional 36V/8.0Ah lithium battery, long endurance
- ▲ Optional backpack battery pack for heavy-duty continuous work
- ▲ Optional power converter for uninterrupted operation

Optional

① Bridge Plate ② Power Converter

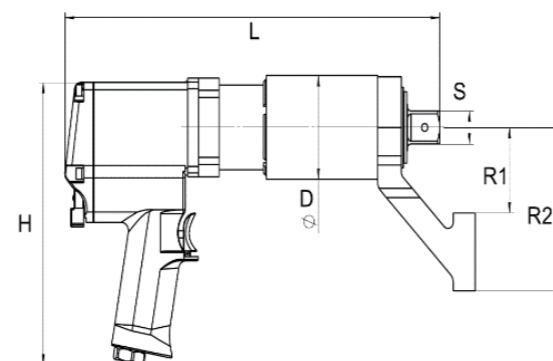


Model	Min Torque (N.m)	Max Torque (N.m)	Square Drive S (mm)	D (mm)	L (mm)	H1 (mm)	H2 (mm)	R1 (mm)	R2 (mm)	Weight (kg)	Max Speed (rpm)
KEM-05L	100	500	3/4"	65	310	80	298	53	105	4.3	32
KEM-10L	130	1000	3/4"	69	319	80	298	53	105	4.8	16
KEM-15L	200	1600	1"	78	364	80	298	66	126	5.2	8.5
KEM-20L	250	2100	1"	78	364	80	298	66	126	5.5	8
KEM-30L	480	3100	1"	88	387	80	298	70	150	7.5	5.5
KEM-40L	650	4000	1"	98	395	80	298	75	150	9.5	4
KEM-50L	850	5000	1-1/2"	110	430	80	298	82.5	157.5	10	3.2
KEM-60L	1100	6000	1-1/2"	110	430	80	298	82.5	157.5	12	2.7
KEM-80L	1900	8000	1-1/2"	126	469	80	298	105	200	14	2
KEM-100L	2000	10000	1-1/2"	126	480	80	298	105	200	16	1.7
KEM-120L	2400	12000	1-1/2"	126	487	80	298	105	200	18	1.7

Pneumatic High-Speed Torque Wrench



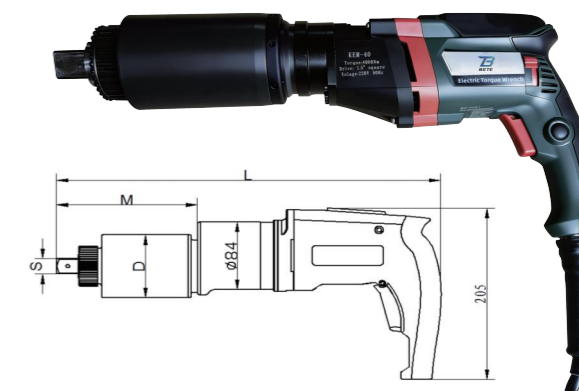
- ▲ Compact & lightweight design with high-power imported motor and aluminum-titanium alloy body.
- ▲ Stable torque output, accuracy $\pm 4\%$, repeatability $\pm 2\%$.
- ▲ No reaction force impact, easy and safe to operate.
- ▲ Ergonomic handle for effective fatigue reduction.
- ▲ Optional: digital torque adjustment (10 N·m step).
- ▲ Optional: bluetooth/Wi-Fi module for smart socket connection.
- ▲ Optional: sensor system for high-precision control (up to $\pm 2\%$).
- ▲ Equipped with portable tool basket for easy station movement.



Model	Min Torque (N.m)	Max Torque (N.m)	Square Drive S (mm)	D (mm)	L (mm)	H (mm)	R1 (mm)	R2 (mm)	Weight (kg)	Max Speed (rpm)
PTG-05	100	500	3/4"	65	280	210	53	105	4	34.3
PTG-10	150	1000	3/4"	69	290	210	60	105	4.8	18.0
PTG-15	200	1500	1"	80	340	210	66	126	5.2	10.3
PTG-20	300	2000	1"	80	340	210	66	126	5.5	8.6
PTG-30	500	3000	1"	88	355	210	85	150	7.5	5.1
PTG-40	700	4000	1-1/2"	98	365	210	80	150	9.5	3.4
PTG-60	1000	6000	1-1/2"	105	410	210	88	158	14	2.6
PTG-80	2000	8000	1-1/2"	125	420	210	120	200	16	1.7
PTG-100	2000	10000	1-1/2"	125	420	210	120	200	20	1.6
PTG-120	3500	12000	1-1/2"	128	450	210	120	200	21	1.0

Wind Power Electric Torque Wrench

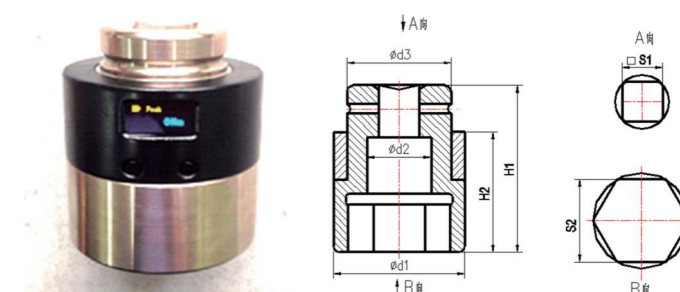
- ▲ Newly designed KEM-A digital torque wrench with programmable preset torque
- ▲ Torque range up to 12000 N·m, single-step torque setting
- ▲ Stable, smooth and controllable torque output
- ▲ Digital display, 220V 50Hz AC power, non-impact continuous rotation
- ▲ Auto-stop at target torque, higher efficiency than hydraulic torque wrenches. 6. Torque accuracy: $\pm 6\%$, repeatability: ± 30 N·m
- ▲ Two torque setting modes: direct input or recommended by screw parameters. Dual-speed for high/low switching



Model	Torque (N·m)	Square Drive S (mm)	D (mm)	L (mm)	M (mm)	Weight (kg)	Torque Range (1st Gear) (N·m)	Torque Range (2st Gear) (N·m)	Speed 1st Gear (rpm)	Max Speed 1st Gear (rpm)
KEM-08A	100-800	3/4"	78	426	174	5	500-800	100-495	14	32
KEM-16A	200-1600	1"	78	452	200	7.7	800-1600	200-790	5	14.5
KEM-20A	300-2000	1"	78	452	200	7.7	900-1200	200-890	4.8	14.1
KEM-28A	400-2800	1"	88	485	233	10.3	1200-2800	400-1180	2.3	6.4
KEM-40A	700-4200	1-1/2"	99	508	256	12.3	1900-4200	700-1875	1.6	4.2
KEM-50A	1000-5000	1-1/2"	113	526	274	15.6	2500-5000	1000-2478	0.9	2.8
KEM-60A	1000-6000	1-1/2"	113	526	274	15.6	2500-6000	1000-2475	0.9	2.8
KEM-80A	1200-8000	1-1/2"	120	536	284	16.8	2500-8000	1200-2450	0.86	2.2
KEM-100A	2000-10000	1-1/2"	128	569	317	21.8	3500-10000	2000-3450	0.6	1.5
KEM-120A	2000-12000	1-1/2"	128	583	331	21.8	4000-12000	2000-3950	0.6	1.5

KTS Series Smart Socket Series

- ▲ Newly designed KTS smart socket measures both static and dynamic torque, with accuracy of 0.5%FS / 1%FS
- ▲ Customizable measuring range and socket size. Built-in display supports real-time/peak torque switching
- ▲ Real-time wireless torque data transmission, working distance: 5-10m
- ▲ Matching PC software displays real-time torque and saves data (bolt quantity, torque, etc.) to Excel files. Working time: approx. 8 hours per full charge
- ▲ Compatible with hydraulic, electric and pneumatic torque wrenches for torque data communication and automatic control



Model	Socket Size	Torque (N·m)	S1	S2 (mm)	H1 (mm)	H2 (mm)	D1 (mm)	D2 (mm)	D3 (mm)	Display
KTS-M20	M20	≤ 600	3/4"	30	80	60	50	--	42	×
KTS-M22	M22	≤ 800	3/4"	34	80	60	52	--	42	×
KTS-M24	M24	≤ 1200	3/4"	36	83	65	54	--	42	√
KTS-M36	M36	≤ 3000	1"	55	102	82	82	38	52	√
KTS-M39	M39	≤ 3600	1-1/2"	60	108	83	90	52	86	√
KTS-M42	M42	≤ 4600	1-1/2"	65	114	74	99	52	86	√
KTS-M45	M45	≤ 5400	1-1/2"	70	120	90	108	49	86	√
KTS-M90	M90	≤ 32000	2-1/2"	130	203	113	196	93	152	√

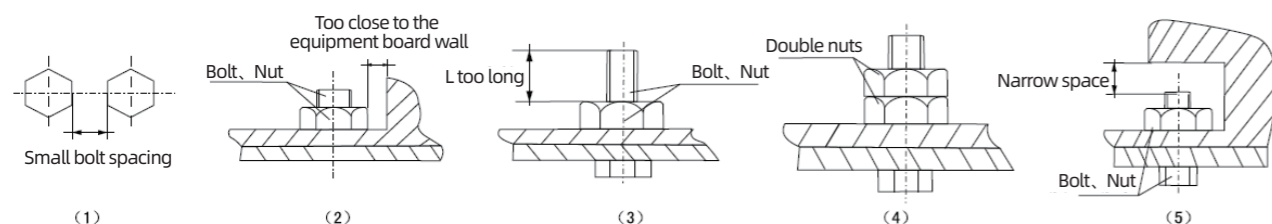
Hydraulic Torque Wrench Select Bolt And Nut Maximum Torque Recommended Values Chart

Strength grade	4.8		6.8		8.8		10.9		12.9		
Min breaking strength	392Mpa		588Mpa		784Mpa		941Mpa		1176Mpa		
Material	General structural steel		Mechanical structural steel		Cr-Mo alloy steel		Ni-Cr-Mo alloy steel		Ni-Cr-Mo alloy steel		
Bolt	A/F	Torque value		Torque value		Torque value		Torque value		Torque value	
M(mm)	S(mm)	KGM	N.m	KGM	N.m	KGM	N.m	KGM	N.m	KGM	N.m
14	22	7	69	10	98	14	137	17	165	23	225
16	24	10	98	14	137	21	206	25	247	36	363
18	27	14	137	21	206	39	284	35	341	49	480
20	30	18	176	28	296	41	402	58	569	69	680
22	34	23	225	34	333	55	539	78	765	93	911
24	36	32	314	48	470	70	686	100	981	120	1176
27	41	45	441	65	637	105	1029	150	1472	180	1764
30	46	60	588	90	882	125	1225	200	1962	240	2352
33	50	75	735	115	1127	150	1470	210	2060	250	2450
36	55	100	980	150	1470	180	1764	250	2453	300	2940
39	60	120	1176	180	1764	220	2156	300	2943	370	3626
42	65	155	1519	240	2352	280	2744	390	3826	470	4606
45	70	180	1764	280	2744	320	3136	450	4415	550	5390
48	75	230	2254	350	3430	400	3920	570	5592	680	6664
52	80	280	2744	420	4116	480	4704	670	6573	850	8330
56	85	360	3528	530	5149	610	5978	860	8437	1050	10290
60	90	410	4018	610	5978	790	7742	1100	10791	1350	13230
64	95	510	4998	760	7448	900	8820	1224	11998	1530	14994
68	100	580	5684	870	8526	1100	10780	1392	13645	1740	17053
72	105	660	6468	1000	9800	1290	12642	1584	15527	1980	19405
76	110	750	7350	1100	10780	1500	14701	1800	17644	2250	22050
80	115	830	8143	1250	12250	1850	18130	1992	19547	2489	24429
85	120	900	8820	1400	13720	2250	22050	2160	21172	2699	26459
90	130	1080	10584	1650	16170	2500	24500	2593	25407	3241	31752
100	145	1400	13720	2050	20090	2800	27440	3361	32935	4200	41160
110	155	1670	16366	2550	24990	3340	32732	4009	39287	5010	49098
120	175	2030	19894	3050	29890	4060	39788	4873	47756	6090	59682

- Above is the German industry standard, torque value in the chart is measured when the bolt reaches 90% of the yield limit.
- Suggested locking torque: the values in the chart x 90%. Eg.: the locking torque of M52, 8.8 grade bolts is 4704 x 90%=4233.6N.m
- Releasing torque is 1.5 to 2 times of locking torque. Eg.: the locking torque of the last example is 4233.6N.m, then its releasing torque is 4233.6 x (1.5 ~ 2) = 6350.4 ~ 8467.2N.m

Spatial location considerations

Due to a number of factors on the scene, pay attention to the position of working space when choose a wrench.



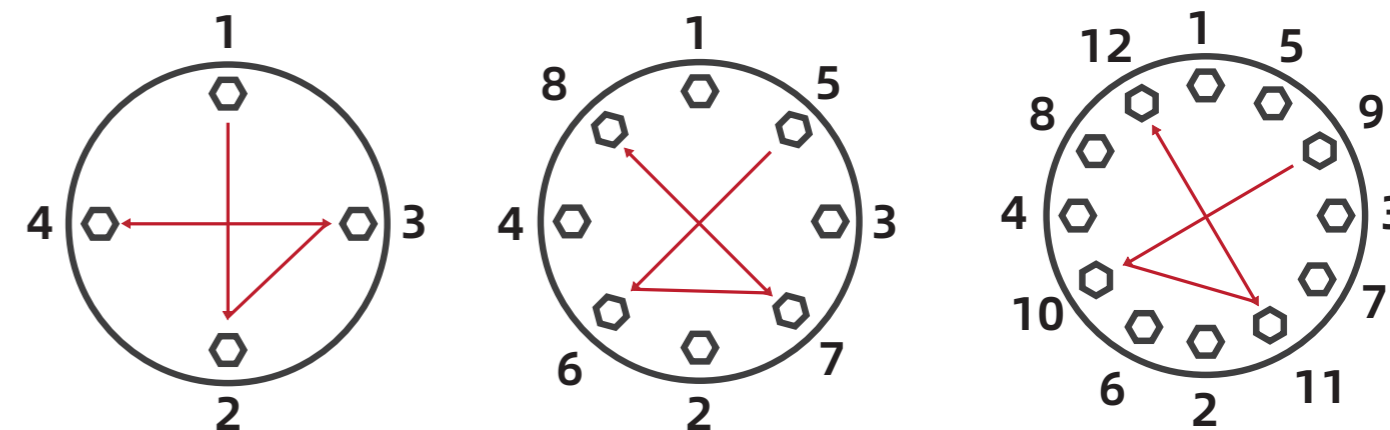
In the event similar to above situations, when the driving wrench cannot work properly, you can choose hollow hydraulic torque wrench.

Correct Operation of Hydraulic Torque Wrench

Tightening Method

- Tighten one bolt at a time to ensure even loading and load distribution.
- Apply torque in stages as specified.

Operation Steps:



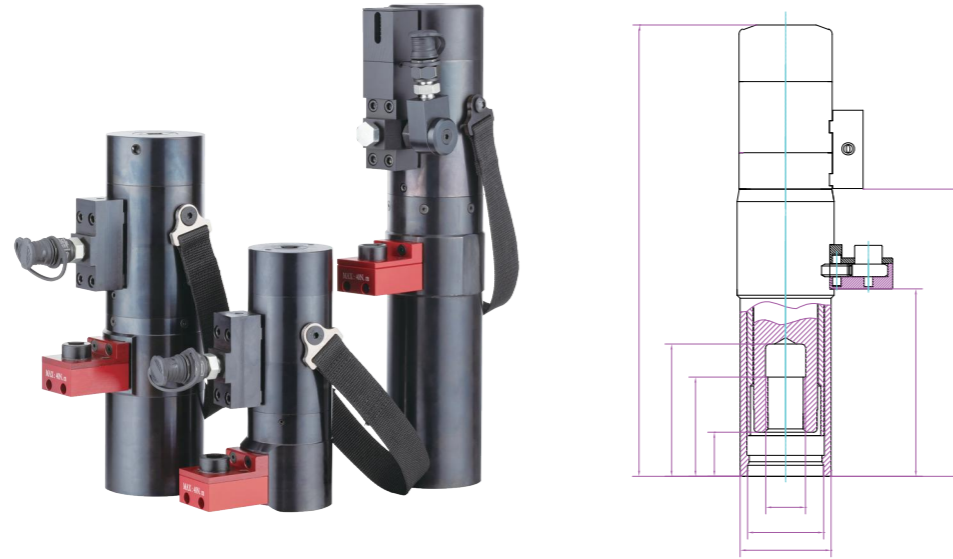
- Tighten with the wrench to ensure 2-3 threads of the bolt extend beyond the nut.
- Following the pattern shown above, tighten each nut to 30% of the final torque.
- Following the pattern shown above, tighten each nut to 60% of the final torque.
- Following the pattern shown above, tighten each nut to the full final torque.
- Starting from Bolt 1, clockwise, re-tighten all bolts to the final torque for the last pass.

! Notes

- Torque for loosening nuts/bolts is higher than for tightening.
- Normally, loosening requires approx. 2.5 times the tightening torque.
- Do not exceed 70% of the tool's maximum torque when loosening.
- The Recommended Maximum Torque Values for Bolts & Nuts is attached in this catalog.

HTE Series Multi-stage Bolt Tensioner For Wind Power

- ▲ With advantages of light, fast, efficient and accurate
- ▲ Small outside diameter with strong force, suitable to use in narrow spaces
- ▲ Spring automatic recovery, with over stroke protection, suitable for frequent use
- ▲ 700-1500 bar working pressure
- ▲ Can work with ultra-high pressure electric stretch pump



Model	Bolt Size (M)	A/F (S)	Stretch Force (kN)	Cylinder Area (mm ²)	Stroke (mm)	Outside Diameter (mm)	Height (mm)	Pressure (MPa)
HTE-M30-FD14	30*4	46	656	4373	8	82	200	150
HTE-M36-FD1	36*4	55	741	4945	10	82.5	410	150
HTE-M36-FD2	36*4	55	741	4945	8	82.5	360	150
HTE-M36-FD3	36*4	55	741	5766	10	89.15	260	150
HTE-M36-FD4	36*4	55	741	4945	10	82.5	445	150
HTE-M36-FD6	36*4	55	865	5766	10	92	274	150
HTE-M36-FD10	36*4	55	741	4945	10	82.5	480	150
HTE-M36-FD11	36*4	55	741	4945	8	82.5	480	150
HTE-M36-FD13	36*4	55	662	4906	8	92	210	135
HTE-M36-FD17	36*4	55	741	4945	8	82.5	350	150
HTE-M36-FD19	36*4	55	925	6856	10	98	400	135
HTE-M39-FD9	39*4	60	845	5639	10	91	428	150
HTE-M42-FD7	42*4.5	65	965	6434	10	98	300	150
HTE-M45-FD15	45*4.5	70	1149	8513	10	112	279	135
HTE-M48-FD5	48*4.5	75	1277	8517	10	112	300	150
HTE-M52-FD18	52*5	80	2196	16269	12	122	314	135
HTE-M56-FD21	56*5.5	85	1543	11429	12	131	358	135
HTE-M64-FD16	64*6	95	2196	16269	12	148	350	135

HTA Series Hydraulic Bolt Stretcher

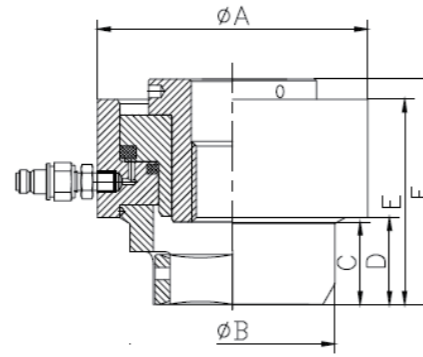
- ▲ Suitable for single-size bolt tensioning with high precision
- ▲ Gravity return, simple structure, easy operation
- ▲ Compact design, lightweight, high tension force



Model	Bolt Size (M)	Load Capacity (kN)	A (mm)	B (mm)	C (mm)	D (mm)	E (mm)	F (mm)	Stroke (mm)	Weight (kg)
HTA16*	M16	179	62	48	23	21	67	76	10	1.1
HTA18*	M18	202	64	50	21	23	69	78		1.3
HTA20*	M20	212	66	55	23	25	71	80		1.5
HTA22*	M22	279	72	59	25	27	75	86		1.7
HTA24	M24	327	78	66	27	29	77	88		2.1
HTA27	M27	388	84	72	30	31	83	93		2.5
HTA30	M30	454	90	73	33	34	86	96	12	3
HTA33	M33	612	102	86	36	37	91	103		4
HTA36	M36	768	114	84	43	40	98	109		5
HTA39	M39	821	120	98	42	43	101	112		5.5
HTA42	M42	874	126	105	45	46	104	116		6.5
HTA45	M45	957	132	110	48	49	112	124		7.5
HTA48	M48	1119	114	125	51	52	116	129		9.5
HTA52	M52	1328	156	130	55	56	120	134		11
HTA56	M56	1393	162	135	59	60	129	145		13
HTA60	M60	1457	168	144	64	64	136	154		15
HTA64	M64	1696	180	155	67	61	133	151		17
HTA68	M68	1837	192	170	72	72	144	162		19.5
HTA72	M72	2226	204	165	76	76	148	166		22.5
HTA76	M76	2518	216	172	80	80	156	174		25.5
HTA80	M80	2827	228	183	81	81	157	175	28.5	
HTA85	M85	3254	246	188	90	90	166	189	35	
HTA90	M90	3604	258	208	95	95	175	198	42	
HTA95	M95	3973	270	220	100	100	190	218	52	
HTA100	M100	4476	288	238	105	105	195	223	60	

HTB Series Hydraulic Bolt Stretcher

- ▲ Wide application for various bolt tensioners
- ▲ Strong adaptability: one model fits multiple bolt sizes
- ▲ High precision, fast operation and safe use



Model	Applicable Bolt (mm)	Load Capacity (kN)	A (mm)	B (mm)	C (mm)	D (mm)	E (mm)	F (mm)	Stroke (mm)	Weight (kg)
HTB1	M20	338	85	55	23	25	74	86	8	3.5
	M22			59	25	27	76	88		
	M24			66	27	29	78	90		
HTB2	M24	486	109	66	27	29	90	105	8	5.5
	M27			72	30	32	93	108		
	M30			78	33	35	96	111		
	M33			85	36	38	99	114		
HTB3	M36	814	133	90	39	41	102	117	8	7
	M33			85	36	44	111	127		
	M36			94	39	47	116	130		
	M39			98	42	50	119	133		
HTB4	M42	989	150	105	45	53	122	136	10	10
	M39			98	41	51	122	135		
	M42			105	44	54	125	138		
	M45			110	47	57	128	141		
HTB5	M48	1413	174	125	50	60	131	144	10	15
	M52			132	53	56	132	145		
	M56			135	59	60	136	149		
HTB6	M56	1649	198	135	59	60	138	154	12	17
	M60			144	63	65	143	159		
	M64			150	67	69	147	163		
	M68			158	71	74	152	168		
HTB7	M72	2131	222	165	75	77	167	185	12	26
	M76			170	79	81	175	193		
HTB8	M76	2544	252	170	79	81	167	197	12	29.5
	M80			175	83	85	172	201		
	M85			185	88	90	176	206		
	M90			205	93	95	181	211		
HTB9	M95	3101	282	215	98	100	189	224	12	38
	M100			235	103	105	194	229		
HTB10	M105	3793	318	240	108	110	203	238	12	49
	M110			250	113	115	208	243		
	M115			260	118	120	213	248		

HTS Series Hydraulic Bolt Stretcher

- ▲ The spring is equipped with over-travel protection, making it suitable for frequent use
- ▲ Over-travel protection reduces seal damage
- ▲ High adaptability, applicable to bolt stretchers of various specifications



Model	Applicable Bolt (mm)	Load Capacity (kN)	A (mm)	B (mm)	C (mm)	D (mm)	E (mm)	F (mm)	Stroke (mm)	Weight (kg)
HTS1A	M20	307	109	55	23	25	111	128	8	3.5
	M22			60	25	27	113	130		
	M24			66	27	29	115	132		
	M27			72	30	32	118	135		
HTS1	M30	486	109	80	33	35	126	144	8	5.5
	M33			85	36	38	129	147		
	M36			90	39	41	132	150		
HTS2	M33	814	132	85	36	44	135	150	8	10
	M36			96	43	43	134	149		
	M39			98	42	50	141	156		
	M42			105	45	53	144	159		
HTS3	M39	989	150	110	42	42	136	150	10	15
	M42			113	53	56	150	164		
	M45			114	50	50	144	161		
	M48			118	52	52	146	163		
HTS4	M52	1413	174	132	55	56	154	174	10	20
	M56			135	59	60	158	175		
HTS5	M56	1649	198	135	59	60	161	179	12	25
	M60			143	64	64	165	183		
	M64			150	68	68	169	187		
	M68			158	72	72	173	191		
HTS6	M72	2131	222	165	76	76	184	207	12	30
	M76			170	80	80	188	211		
HTS7	M76	2544	252	170	80	80	194	221	12	35
	M80			175	85	85	199	226		
	M85			190	76	85	199	226		
	M90			205	95	95	209	236		
HTS8	M95	3101	282	215	100	100	214	243	12	50
	M100			235	105	105	219	248		
HTS9	M105	3792	318	240	110	110	224	254	12	80
	M110			235	115	120	234	264		
	M115			260	120	120	234	264		
HTS10	M115	4900	360	260	120	120	261	297	12	120
	M120			270	125	125	266	302		
	M125			286	140	130	271	307		
HTS11	M130	6255	408	285	135	135	276	312	12	135
	M135			292	140	140	281	317		
	M140			300	145	145	286	322		
	M145			312	165	155	296	332		
HTS12	M145	8423	456	312	150	150	301	337	12	150
	M150			320	155	155	306	342		
	M160			340	160	165	316	352		

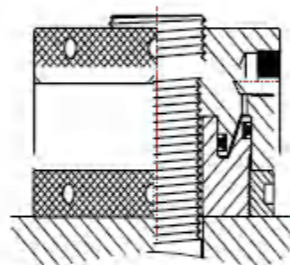
HN Series Hydraulic Nut

- ▲ Torque-free design eliminates friction and bolt distortion, applying pure axial tension to bolts
- ▲ Equipped with stroke indicator for monitoring, measuring and controlling stroke during operation
- ▲ Ideal for narrow spaces and heavy-duty vibrating machinery; supports simultaneous multi-bolt assembly
- ▲ Accurate preload setting with precision up to ±3%

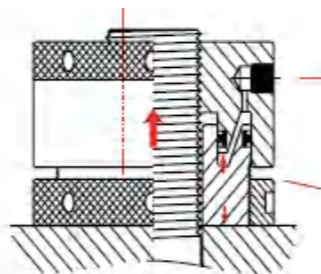


Model	Bolt Size (M)	Output Force (kN)	Outside Dia. (mm)	Height (mm)	Stroke (mm)
HN-022	M22	198	62	53	6
HN-024	M24	212	65	55	6
HN-027	M27	254	72	58	6
HN-030	M30	259	75	61	6
HN-033	M33	338	83	64	6
HN-036	M36	368	88	67	6
HN-039	M39	397	94	70	6
HN-042	M42	427	100	73	6
HN-045	M45	486	106	77	6
HN-048	M48	600	118	80	6
HN-052	M52	636	123	84	8
HN-056	M56	804	135	88	8
HN-060	M60	989	147	92	8
HN-064	M64	1036	153	94	8
HN-068	M68	1083	159	98	8
HN-072	M72	1298	170	104	10
HN-076	M76	1351	176	108	10
HN-080	M80	1590	194	112	10
HN-085	M85	1708	200	117	10
HN-090	M90	1976	212	122	10
HN-095	M95	2261	223	127	10
HN-100	M100	2450	236	135	15

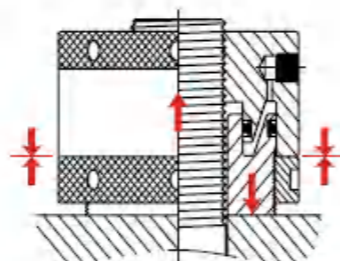
1. Screw the hydraulic nut onto the top of the bolt.



2. Apply hydraulic pressure to lift the piston and stretch the bolt.



3. Tighten the locking ring against the nut body, then release pressure to finish.



RSM Series Single-acting Ultra-thin Hydraulic Cylinder

- ▲ Single-acting cylinder with spring return for easy, quick operation
- ▲ Painted surface for improved corrosion resistance
- ▲ Lightweight, compact ultra-thin design, ideal for confined spaces

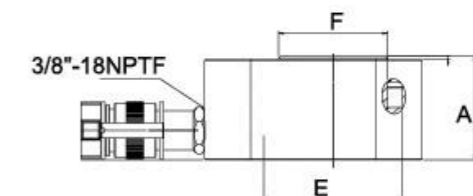
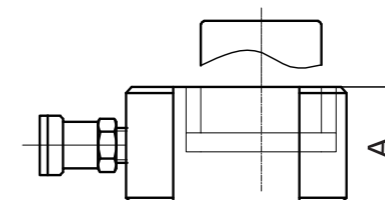
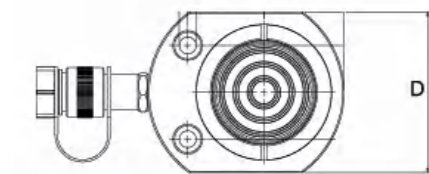
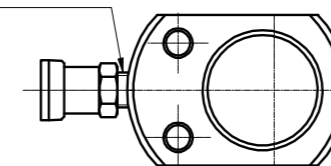


Handle Type

Optional (O) Standard (S)

- Welded Handle
- ★ Eye Bolt
- ▲ Folding Handle
- Threaded Folding Handle

3/8"-18NPT



Handle Type (S)	Model	Ton (t)	Stroke (mm)	Pressure Area (cm ²)	Oil Volume (cm ³)	Closed Height A(mm)	Extended Height (mm)	Outer Dia. D(mm)	Inner Dia. E(mm)	Ram Dia. F(mm)	Weight (kg)
	RSM50	5	6	6.5	4	32	38	59x42	28.7	25.4	1
	RSM100	10	12	14.5	16	42	54	83x56	42.9	38.1	1.4
	RSM200	20	11	28.7	31	51	62	100x75	60.5	50.8	3.1
	RSM300	30	13	41.8	54	58	71	118x95	73.2	63.4	4.5
	RSM500	50	16	62.1	101	66	82	140x115	88.9	69.8	6.8
●	RSM750	75	16	102.6	166	79	95	166x140	114.3	82.6	11.3
●	RSM1000	100	16	126.7	203	85	101	178x153	127	92.2	14.5
●	RSM1500	150	16	198.1	321	100	116	216x191	158.8	114.3	26.3

RCS Series Single-acting Low-height Hydraulic Cylinder

- ▲ Painted surface for enhanced corrosion resistance
- ▲ Single-acting cylinder with spring return for easy, quick operation
- ▲ Lightweight and compact low-profile design, ideal for confined spaces



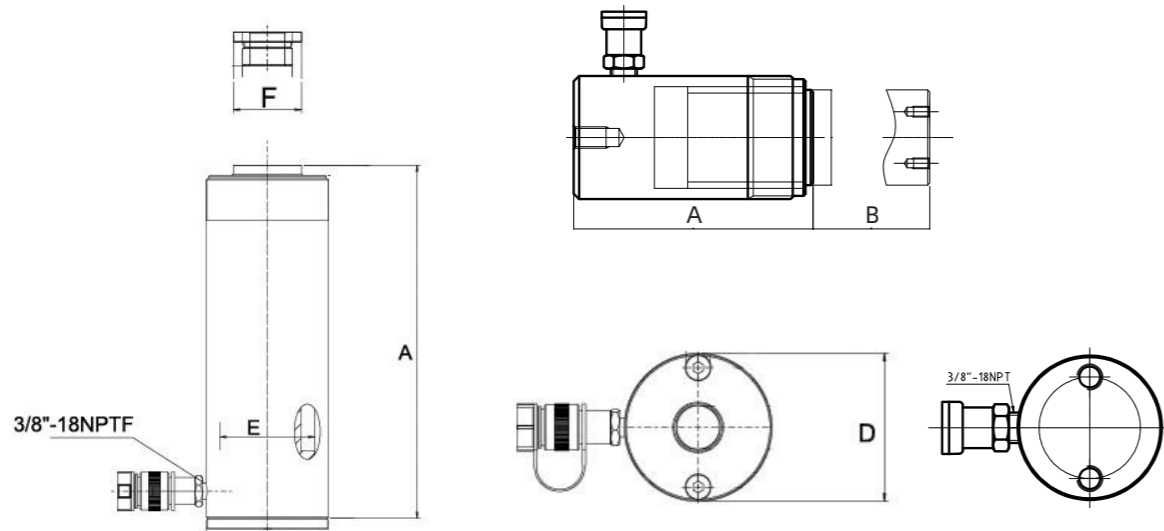
70 Mpa



Handle Type

Optional (O) Standard (S)

- Welded Handle
- ★ Eye Bolt
- ▲ Folding Handle
- Threaded Folding Handle



Handle Type (S)	Model	Ton (t)	Stroke (mm)	Pressure Area (cm ²)	Oil Volume (cm ³)	Closed Height A(mm)	Extended Height (mm)	Outer Dia. D(mm)	Inner Dia. E(mm)	Ram Dia. F(mm)	Weight (kg)
	RCS101	10	38	14.5	55	88	126	69	42.9	38	4.1
	RCS201	20	45	28.7	129	98	143	92	60.5	50	5
	RCS302	30	61	42.1	261	117	179	101	73.2	65	6.8
●	RCS502	50	60	62.1	373	122	182	124	88.9	70	10.9
●	RCS1002	100	57	126.7	722	141	198	165	127	90	22.7

RCH Series Single acting Hollow Hydraulic Cylinder

- ▲ Hollow plunger design for pushing and pulling with fixtures
- ▲ Single-acting cylinder with spring return for fast, easy operation
- ▲ Paint-coated surface for excellent corrosion resistance



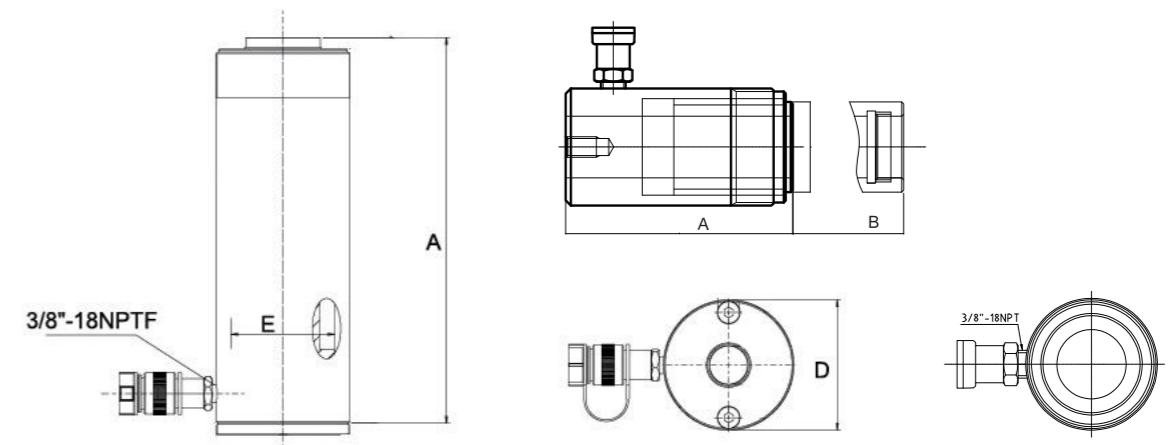
70 Mpa



Handle Type

Optional (O) Standard (S)

- Welded Handle
- ★ Eye Bolt
- ▲ Folding Handle
- Threaded Folding Handle



Handle Type (S)	Model	Ton (t)	Stroke (mm)	Pressure Area (cm ²)	Oil Volume (cm ³)	Closed Height A(mm)	Extended Height (mm)	Outer Dia. D(mm)	Inner Dia. E(mm)	Ram Dia. F(mm)	Weight (kg)
	RCH120	12	8	17.9	14	55	63	69	54.1	35	1.5
	RCH121		42		75	120	162				2.8
	RCH1211		42		75	120	162				2.8
	RCH123		76		136	184	260				4.4
●	RCH202	20	50	30.7	150	162	211	99	73.1	55	7.7
●	RCH206		155		476	306	461				14.1
●	RCH302	30	64	46.6	298	179	242	115	88.9	63.5	10.9
●	RCH306		155		722	331	485				21.8
▲	RCH603	60	77	82.3	626	248	323	160	123.9	92	28.1
▲	RCH606		152		1259	325	476				35.4
▲	RCH1003	100	76	133	1011	254	330	212	165.1	127	63

RC Series Single-Acting General Hydraulic Cylinder

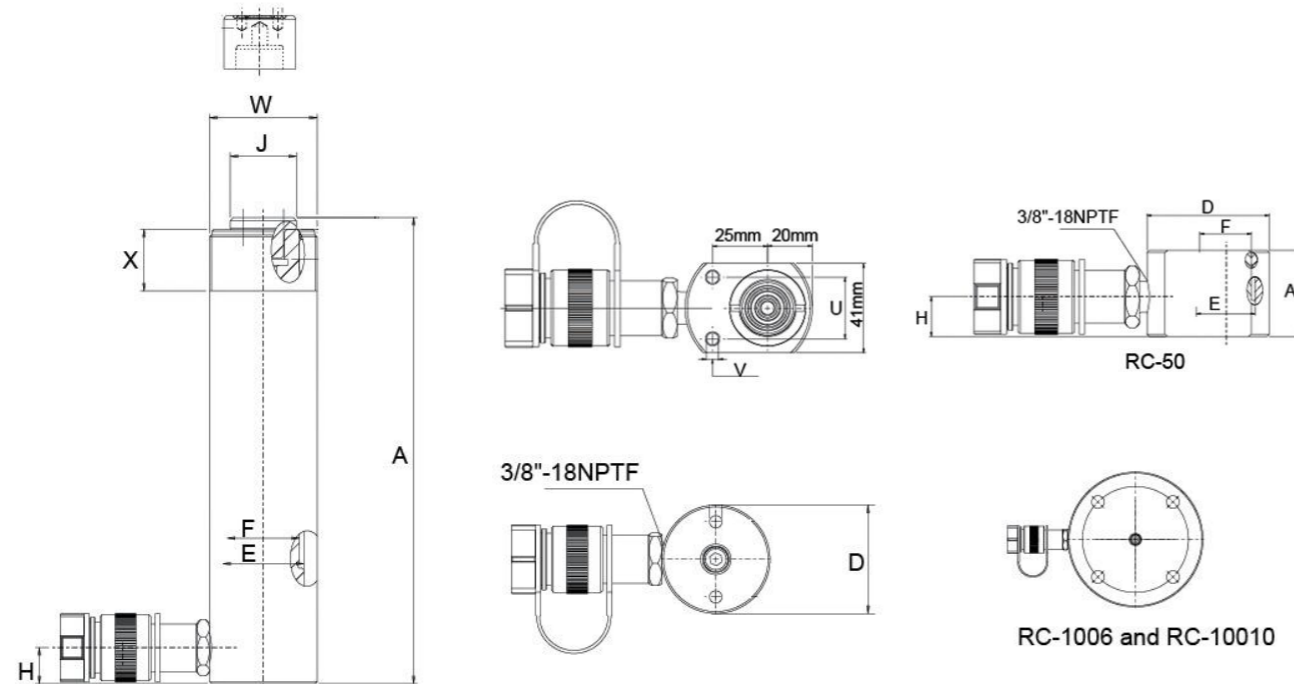
- ▲ Single-acting cylinder, spring return for fast & easy operation
- ▲ High-strength alloy steel piston, durable & long service life
- ▲ Paint-coated surface for better corrosion resistance; equipped with handle for easy carrying

70 Mpa



Handle Type
Optional (O) Standard (S)

- Welded Handle
- ★ Eye Bolt
- ▲ Folding Handle
- Threaded Folding Handle



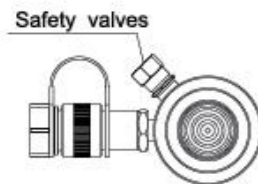
Handle Type		Model	Ton (t)	Stroke (mm)	Pressure Area (cm ²)	Oil Volume (cm ³)	Closed Height A(mm)	Extended Height (mm)	Outer Dia. D(mm)	Inner Dia. E(mm)	Ram Dia. F(mm)	Thread Length X(mm)	Weight (kg)
(O)	(S)												
		RC50	5	16	6.5	11	42	58	28.7	25.4	1½"- 16	28	1.1
		RC51		25		16	110	38					1.1
		RC53		76		50	165	38					1.5
		RC55		127		83	215	38					1.9
		RC57		177		115	273	38					2.4
		RC59		232		151	323	38					2.8
		RC101	10	26	14.5	38	89	57	42.9	38.1	2¼"- 14	27	1.8
		RC102		54		78	121						2.3
		RC104		105		152	171						3.3
		RC106		156		226	247						4.4
		RC108		203		294	298						5.4
		RC1010		257		373	349						6.4
		RC1012		304		441	400						6.8
		RC1014		356		516	450						8.2
		RC151	15	25	20.3	51	124	70	50.8	41.4	2¾"- 16	30	3.3
		RC152		51		104	149						4.1
		RC154		101		205	200						5
		RC156		152		308	271						6.8
		RC158		203		411	322						8.2
		RC1510*		254		516	373						9.5
		RC1512*		305		619	423						10.9
		RC1514*		356		723	474						11.8
		RC251	25	26	33.2	86	139	85	65	57.2	3¾"- 12	49	5.9
		RC252		50		166	165						6.4
		RC254		102		339	215						8.2
		RC256		158		525	273						10
		RC258		210		697	323						12.2
		RC2510*		261		867	374						14.1
		RC2512*		311		1033	425						16.3
		RC2514		362		1202	476						17.7
	■	RC308	30	209	42.1	880	387	102	73.2	57.2	-	-	18.1
	■	RC502	50	51	71.2	361	176	127	95.2	79.5	5"- 12	55	15
	▲	RC504		101		719	227						19.1
	▲	RC506		159		1131	282						23.1
	▲	RC5013		337		2399	460						37.6
	▲ ●	RC756	75	156	102.6	1601	285	147	114.3	95.2	5¾"- 12	44	29.5
	▲ ★	RC7513*		333		3417	492						59
	▲ ★	RC1006	100	168	133.6	2239	357	177	130.3	104.9	6¾"- 12	44	59
	▲ ★	RC10010		260		3466	449						72.6

RR Series Double-Acting Hydraulic Cylinder

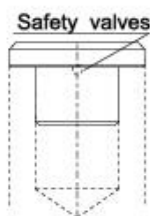
- ▲ Double-acting design for pushing and pulling applications
- ▲ Built-in safety valve prevents overpressure damage
- ▲ External cylinder thread, plunger thread and base tapped holes for easy mounting
- ▲ Hard chrome-plated plunger for wear and corrosion resistance
- ▲ Dust ring protects cylinder bore from contamination
- ▲ Top nut prevents plunger over-extension
- ▲ Powder-coated surface for appearance, corrosion and rust resistance
- ▲ All models supplied with 3/8 NPT quick coupler and dust cap
- ▲ Suitable for bridge lifting, construction renovation, shipbuilding, utilities and mining equipment maintenance
- ▲ RR Series is ideal for applications with load holding and precise pressure control



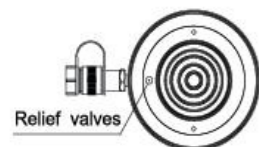
70 Mpa



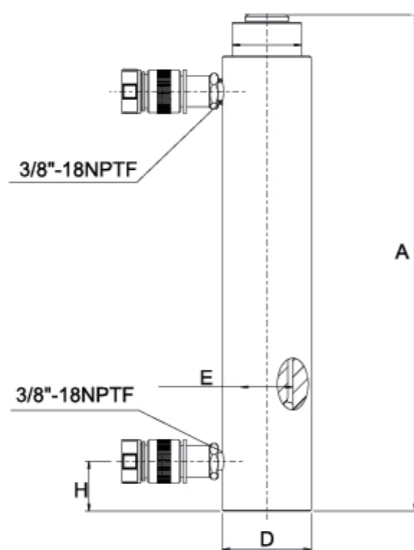
RR-10ton



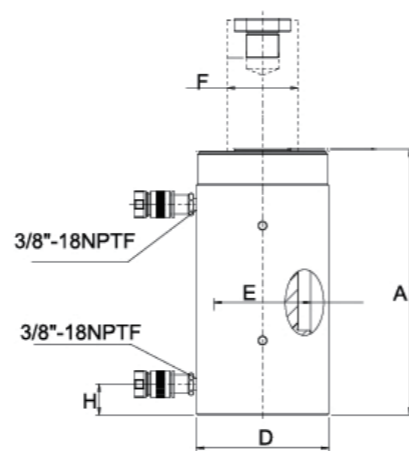
RR-30ton~RR-75ton



RR-100ton~RR-500ton



RR-1010 ~ RR-3014



RR-506 ~ RR-50048

Handle Type
Optional (O) Standard (S)

- Welded Handle
- Eye Bolt
- Folding Handle
- Threaded Folding Handle

! Double-acting hydraulic jacks must be used with 4-port valve hydraulic pumps.

! The actual retraction capacity of the jack/hydraulic cylinder may be lower than the calculated value, due to the relief valve pressure setting.
 RR-308/3014: 4000psi
 RR-506/5013/5020: 6950psi
 RR-756/7513: 7200psi

Handle Type (O) (S)	Model	Ton (t)	Stroke (mm)	Force (t)		Pressure Area(mm ²)		Oil Volume (cm ³)		Closed Height A (mm)	Extended Height B (mm)	Inner Dia. D (mm)	Outer Dia. E (mm)	Ram Dia. F (mm)	Weight (kg)				
				Push	Pull	Push	Pull	Push	Pull										
	RR-1010	10	254	101	33	14.5	4.8	368	122	409	663	73	42.9	34.9	12				
	RR-1012		305													442	147	457	762
	RR-308	30	209	295	53	42.1	19.1	879	400	387	596	101	73.2	54.1	18				
	RR-3014		368													1549	703	549	917
▲ ★	RR-506	50	156	498	103	71.2	21.5	1111	335	331	487	127	95.2	79.5	30				
▲ ★	RR-5013		334													2378	718	509	843
▲ ★	RR-5020		511													3638	1099	733	1244
▲ ★	RR-756	75	156	718	156	102.6	31.4	1601	490	347	503	146	114.3	95.2	41				
▲ ★	RR-7513		333													3417	1046	525	858
	RR-1006	95	168	933	435	133.3	62.4	2238	1045	357	525	177	130.3	95.2	61				
	RR-10013		333													4439	2071	524	857
▲ ★	RR-10018		460													6132	2861	687	1147
	RR-1502	140	57	1386	668	198.1	95.4	1129	544	196	253	203	158.8	114.3	49				
▲ ★	RR-1506		156													3090	1488	385	541
▲ ★	RR-15013		333													6598	3177	582	915
▲ ★	RR-15032		815													16145	7775	1116	1931
▲ ★	RR-2006		152													4332	2209	430	582
▲ ★	RR-20013	200	330	1995	1017	285	145.3	9405	4795	608	938	247	190.5	133.4	147				
▲ ★	RR-20018		457													13025	6640	765	1222
▲ ★	RR-20024		610													17385	8863	917	1527
▲ ★	RR-20036		914													26049	13280	1222	2136
▲ ★	RR-20048		1219													34741	17712	1527	2746
▲ ★	RR-3006	325	153	3201	1703	457.3	243.2	6997	3721	485	638	311	241.3	165.1	200				
▲ ★	RR-30012		305													13947	7418	638	943
▲ ★	RR-30018		457													20889	11114	790	1247
▲ ★	RR-30024		609													27850	14811	943	1552
▲ ★	RR-30036		915													41843	22253	1247	2162
▲ ★	RR-30048		1219													55745	29646	1552	2771
▲ ★	RR-4006	440	152	4292	2297	613.3	328.1	9319	4987	538	690	358	279.4	190.5	303				
▲ ★	RR-40012		305													18700	10007	690	955
▲ ★	RR-40018		457													28018	14995	843	1300
▲ ★	RR-40024		610													37400	20014	955	1605
▲ ★	RR-40036		914													56037	29988	1300	2214
▲ ★	RR-40048		1219													74737	39996	1605	2824
▲ ★	RR-5006	520	153	5108	2838	729.7	405.4	11164	6203	577	730	397	304.8	203.2	432				
▲ ★	RR-50012		305													22256	12365	730	1035
▲ ★	RR-50018		457													33347	18526	882	1339
▲ ★	RR-50024		609													44440	24689	1035	1644
▲ ★	RR-50036		915													66766	36973	1339	2254
▲ ★	RR-50048		1219													88951	49418	1644	2863
▲ ★	RR-50048		1219													88951	49418	1644	2863

RRH Series Double-Acting Hollow Hydraulic Cylinder

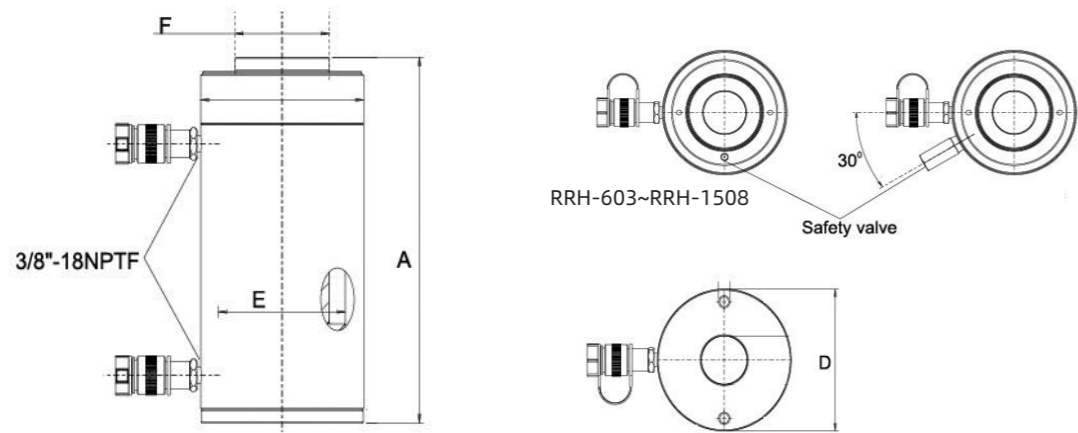
- ▲ Hollow plunger design for both pushing and pulling with fixtures
- ▲ Built-in safety valve protects against overload
- ▲ Double-acting cylinder with fast return speed
- ▲ Composite coating for excellent corrosion resistance



70 Mpa



Handle Type	
Optional (O)	Standard (S)
	● Welded Handle
	★ Eye Bolt
	▲ Folding Handle
	■ Threaded Folding Handle



Handle Type	Model	Ton (t)	Stroke (mm)	Force (t)		Pressure Area(mm ²)		Oil Volume (cm ³)		Closed Height A (mm)	Extended Height B (mm)	Inner Dia. D (mm)	Outer Dia. E (mm)	Ram Dia. F (mm)	Weight (kg)		
				Push	Pull	Push	Pull	Push	Pull								
▲	RRH307	30	178	326	213	46.6	30.4	829	541	330	508	114	88.9	63.5	21		
▲	RRH3010		258					1202	784						431	689	27
▲	RRH603	60	89	576	380	82.3	54.2	733	482	247	336	159	123.9	92.2	28		
▲	RRH606		166					1366	900						323	489	35
▲	RRH6010		257					2115	1393						438	695	45
▲	RRH1001	100	38	931	612	133	87.4	505	333	165	203	213	165.1	127	33		
▲	RRH1003		76					1011	666						254	330	61
▲	RRH1006		153					2035	1337						342	495	79
▲	RRH10010		257					3420	2246						460	717	106
▲	RRH1508	150	203	1429	718	204.1	102.6	4144	2083	349	552	247	190.5	152.4	111		

RAC Series Single-acting Aluminum Alloy Cylinder

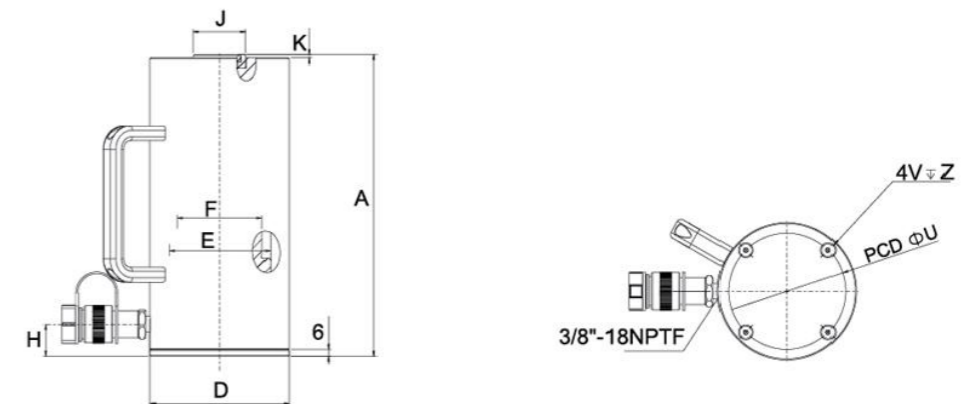
- ▲ Aluminum alloy construction, lightweight & portable
- ▲ 7075-T6 aluminum alloy for maximum capacity with minimum weight
- ▲ Anodized pads and cylinder body for wear resistance and longer service life
- ▲ High-strength spring for fast plunger retraction
- ▲ Multi-layer oil seal design to reduce friction and resist side load damage
- ▲ Top nut prevents plunger over-extension
- ▲ All models supplied with 3/8 NPT quick coupler and dust cap



70 Mpa



Handle Type	
Optional (O)	Standard (S)
	● Welded Handle
	★ Eye Bolt
	▲ Folding Handle
	■ Threaded Folding Handle



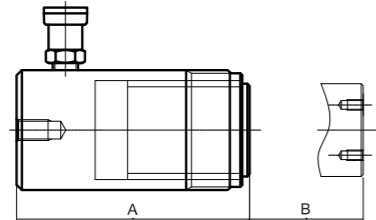
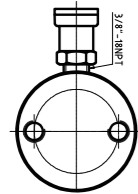
Handle Type (S)	Model	Ton (t)	Stroke (mm)	Pressure Area (cm ²)	Oil Volume (cm ³)	Closed Height A(mm)	Extended Height (mm)	Outer Dia. D(mm)	Inner Dia. E(mm)	Ram Dia. F(mm)	Weight (kg)
■	RAC-202	20	50	31.2	156	174	224	85	63	50	3.6
■	RAC-204	20	100	31.2	312	224	324	85	63	50	4.1
■	RAC-206	20	150	31.2	468	274	424	85	63	50	4.6
■	RAC-302	30	50	44.2	221	181	231	100	75	60	4.5
■	RAC-304	30	100	44.2	442	231	331	100	75	60	5.2
■	RAC-306	30	150	44.2	663	281	431	100	75	60	5.9
■	RAC-502	50	50	70.9	354	186	236	130	95	80	8.5
■	RAC-504	50	100	70.9	709	236	336	130	95	80	9.8
■	RAC-506	50	150	70.8	1063	286	436	130	95	80	11.1
■	RAC-1004	100	100	143.1	1431	271	371	180	135	110	19.6
■	RAC-1006	100	150	143.1	2147	321	471	180	135	110	21.9
■	RAC-1008	100	200	143.1	2863	371	571	180	135	110	24.2
■	RAC-1506	150	150	227	3405	343	493	230	170	140	33.3

CLL Series Single-acting High-tonnage Locking Nut Hydraulic Cylinder

- ▲ Self-locking mechanism maintains safe load indefinitely after pressure release
- ▲ Overflow hole design controls stroke and ensures safety
- ▲ Composite coating for superior corrosion resistance
- ▲ Single-acting cylinder with load return



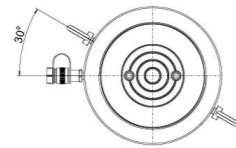
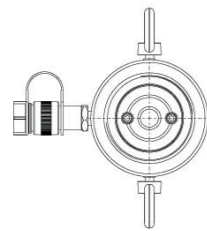
70 Mpa



Handle Type

Optional (O) Standard (S)

- Welded Handle
- ★ Eye Bolt
- ▲ Folding Handle
- Threaded Folding Handle

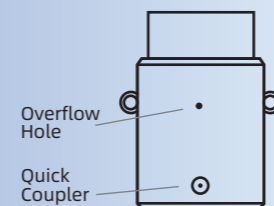


WARNING

For single-acting high-tonnage jacks (CLP, CLL, CLS Series)

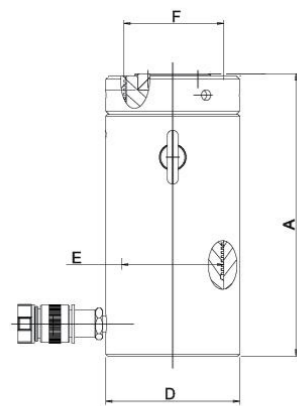
Hydraulic oil flows from the overflow hole at full stroke

This warns and prevents plunger over-extension

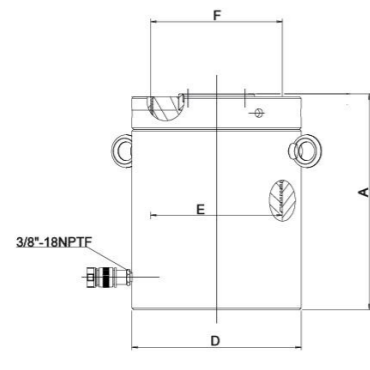


Overflow Hole

Quick Coupler



CLL-502 to CLL-25012

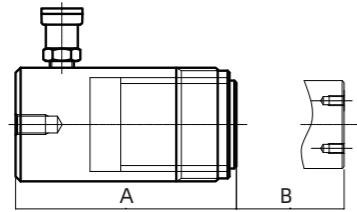
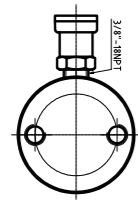


CLL-3002 to CLL-100012

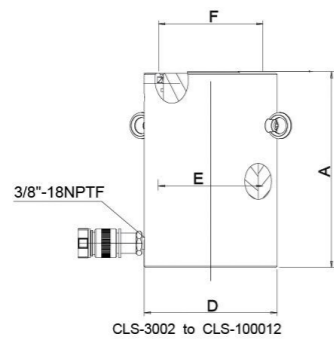
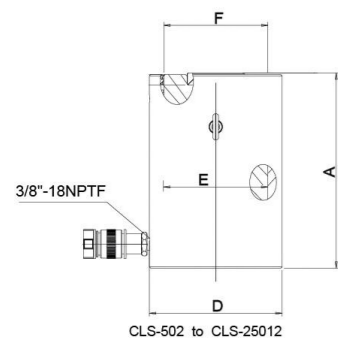
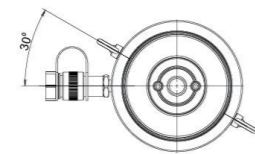
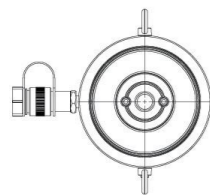
Handle Type (S)	Model	Ton (t)	Stroke (mm)	Pressure Area (cm ²)	Oil Volume (cm ³)	Closed Height A(mm)	Extended Height B(mm)	Outer Dia. D(mm)	Inner Dia. E(mm)	Ram Dia. F(mm)	Weight (kg)
★	CLL502	50	50	70.9	355	164	214	125	95	71	15
	CLL504		100		709	214	314				20
	CLL506		150		1064	264	414				25
	CLL508		200		1418	314	514				30
	CLL5010		250		1773	364	614				35
	CLL5012		300		2127	414	714				40
★	CLL1002	100	50	132.7	664	187	237	165	130	71	30
	CLL1004		100		1327	237	337				39
	CLL1006		150		1991	287	437				48
	CLL1008		200		2654	337	537				56
	CLL10010		250		3318	387	637				64
	CLL10012		300		3398	437	737				73
★	CLL1502	150	50	198.6	993	209	259	205	159	130	53
	CLL1504		100		1986	259	359				66
	CLL1506		150		2979	309	459				78
	CLL1508		200		3972	359	559				92
	CLL15010		250		4965	409	659				104
	CLL15012		300		5958	459	759				117
★	CLL2002	200	50	265.6	1330	243	293	235	184	130	83
	CLL2006		150		3989	343	493				117
	CLL20012		300		7995	493	793				170
★	CLL2502	250	50	366.4	1832	249	299	275	216	150	116
	CLL2506		150		5496	349	499				162
	CLL25012		300		10995	499	799				234
★	CLL3002	300	50	456.2	2281	295	345	310	241	139	173
	CLL3006		150		6843	395	545				233
	CLL30012		300		13740	454	845				323
★	CLL4002	400	50	559.9	2800	335	385	350	267	159	250
	CLL4006		150		8399	435	585				327
	CLL40012		300		16800	585	885				441
★	CLL5002	500	50	731.1	3656	375	425	400	305	179	367
	CLL5006		150		10967	475	625				466
	CLL50012		300		21930	625	925				617
★	CLL6002	600	50	845.8	4277	395	445	430	330	194	446
	CLL6006		150		12830	495	645				562
	CLL60012		300		25650	645	945				737
★	CLL8002	800	50	1176.9	5882	455	505	505	387	224	709
	CLL8006		150		17645	555	705				870
	CLL80012		300		35370	705	1005				1110
★	CLL10002	1000	50	1466.4	7329	495	545	560	432	249	949
	CLL10006		150		21986	595	745				1141
	CLL100012		300		43980	745	1045				1430

CLS Series Single-acting Heavy-duty Hydraulic Cylinder

- ▲ Overflow hole design for stroke control and safety guarantee
- ▲ Single-acting cylinder with load return function
- ▲ Mountable anti-eccentric load pressure head for tool protection
- ▲ Composite coating for stronger corrosion resistance

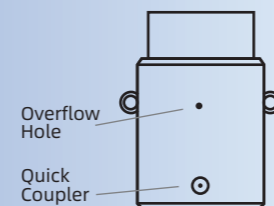


Handle Type	
Optional (O)	Standard (S)
	● Welded Handle
	★ Eye Bolt
	▲ Folding Handle
	■ Threaded Folding Handle



! WARNING

For single-acting high-tonnage jacks (CLP, CLL, CLS Series)
Hydraulic oil flows from the overflow hole at full stroke
This warns and prevents plunger over-extension



Handle Type (S)	Model	Ton (t)	Stroke (mm)	Pressure Area (cm ²)	Oil Volume (cm ³)	Closed Height A(mm)	Extended Height B(mm)	Outer Dia. D(mm)	Inner Dia. E(mm)	Ram Dia. F(mm)	Weight (kg)
★	CLS502*	50	50	70.9	355	128	178	125	95	95	14
	CLS504*		100		709	178	278				18
	CLS506		150		1064	228	378				23
	CLS508*		200		1418	278	478				28
	CLS5010*		250		1773	328	578				33
	CLS5012*		300		2127	378	678				38
★	CLS1002*	100	50	132.7	664	143	193	164	130	130	24
	CLS1004		100		1327	193	293				32
	CLS1006		150		1991	243	393				40
	CLS1008*		200		2654	293	493				49
	CLS10010		250		3318	343	593				58
	CLS10012		300		3981	393	693				66
★	CLS1502	150	50	198.6	993	165	215	205	159	159	43
	CLS1504		100		1986	215	315				55
	CLS1506		150		2979	265	415				69
	CLS1508		200		3972	315	515				82
	CLS15010		250		4965	365	615				95
	CLS15012		300		5958	415	715				108
★	CLS2002	200	50	265.6	1330	193	243	235	183.9	183.9	66
	CLS2006		150		3898	293	443				101
	CLS20012		300		7977	443	743				154
★	CLS2502	250	50	366.1	1832	193	243	275	215.9	215.9	90
	CLS2506		150		5496	293	443				137
	CLS25012		300		10996	443	743				208
★	CLS3002	300	50	456.2	2281	235	285	310	241	241	137
	CLS3006		150		6483	335	485				198
	CLS30012		300		13710	485	785				288
★	CLS4002	400	50	559.9	2800	265	315	350	267	267	200
	CLS4006		150		8399	365	515				275
	CLS40012		300		16770	515	815				390
★	CLS5002	500	50	731.1	3656	295	345	400	305.1	305.1	289
	CLS5006		150		10967	395	545				390
	CLS50012		300		21900	545	845				540
★	CLS6002	600	50	845.8	4277	310	360	430	329.9	329.9	350
	CLS6006		150		12830	410	560				456
	CLS60012		300		25710	560	860				640
★	CLS8002	800	50	1176.9	5882	355	405	505	387.1	387.1	549
	CLS8006		150		17645	455	605				709
	CLS80012		300		35370	605	905				950
★	CLS10002	1000	50	1466.4	7329	385	435	560	432.1	432.1	729
	CLS10006		150		21986	485	635				921
	CLS100012		300		43950	635	935				1210

CLSG Series Single-acting High-tonnage Hydraulic Cylinder

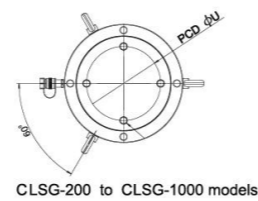
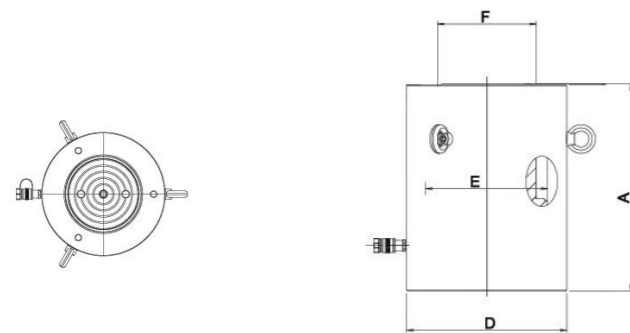
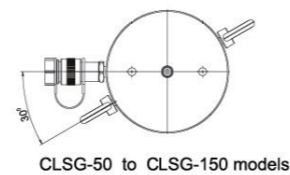
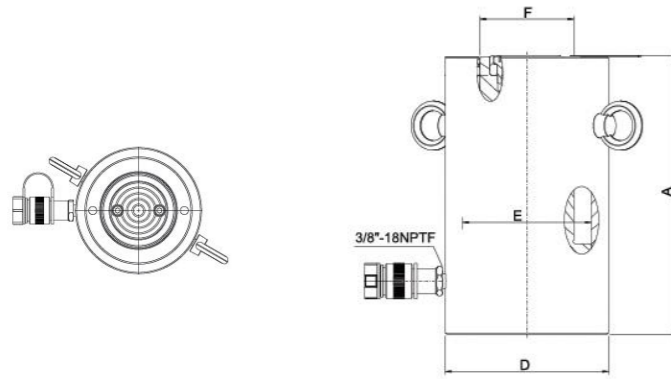
- ▲ All CLSG Series models are equipped with base mounting holes
- ▲ Single-acting, gravity return
- ▲ Piston rod & cylinder inner wall with hard chrome plating for wear and corrosion resistance
- ▲ Dust ring reduces contamination adhesion
- ▲ Integral top nut protects piston rod from over-travel
- ▲ Powder-coated surface for good appearance, corrosion and rust resistance
- ▲ Each model includes 3/8 NPT quick coupler and dust cap

MAX
70 Mpa



Handle Type
Optional (O) Standard (S)

- Welded Handle
- ★ Eye Bolt
- ▲ Folding Handle
- Threaded Folding Handle



Handle Type (S)	Model	Ton (t)	Stroke (mm)	Pressure Area (cm ²)	Oil Volume (cm ³)	Closed Height A(mm)	Extended Height B(mm)	Outer Dia. D(mm)	Inner Dia. E(mm)	Ram Dia. F(mm)	Weight (kg)
	CLSG-502	50	50	77	385	162	212	130	95	70	17
	CLSG-504		100		770	212	312				20
	CLSG-506		150		1155	262	412				23
	CLSG-508		200		1540	312	512				27
	CLSG-5010		250		1924	362	612				31
	CLSG-5012		300		2309	412	712				34
	CLSG-1002	100	50	132.7	664	182	232	165	130	95	19
	CLSG-1004		100		1327	232	332				29
	CLSG-1006		150		1991	282	432				40
	CLSG-1008		200		3655	332	532				50
	CLSG-10010		250		3318	382	632				61
	CLSG-10012		300		3982	432	732				71
	CLSG-1502	150	50	198.6	993	196	246	205	159	114	39
	CLSG-1504		100		1988	246	346				52
	CLSG-1506		150		2978	296	446				65
	CLSG-1508		200		3971	346	546				78
	CLSG-15010		250		4954	396	646				92
	CLSG-15012		300		5957	446	746				105
★	CLSG-2002	200	50	265.6	1330	215	266	235	184	133	55
	CLSG-2006		150		3989	316	466				91
	CLSG-20012		300		7977	466	766				146
★	CLSG-2502	250	50	366.4	1832	235	285	275	216	165	102
	CLSG-2506		150		5497	335	485				136
	CLSG-25012		300		10993	485	785				207
★	CLSG-3002	300	50	456.2	2281	312	362	310	241	197	184
	CLSG-3006		150		6843	412	562				232
	CLSG-30012		300		13685	562	862				303
★	CLSG-4002	400	50	559.9	2800	374	425	350	267	216	270
	CLSG-4006		150		8399	474	625				330
	CLSG-40012		300		16797	624	925				421
★	CLSG-5002	500	50	730.6	3653	419	469	400	305	246	401
	CLSG-5006		150		10959	519	669				480
	CLSG-50012		300		21918	669	969				599
★	CLSG-6002	600	50	855.3	4275	429	479	430	330	267	474
	CLSG-6006		150		12829	529	679				565
	CLSG-60012		300		25659	679	979				701
★	CLSG-8002	800	50	1176.3	5881	474	524	505	387	317	741
	CLSG-8006		150		17644	574	724				868
	CLSG-80012		300		35288	724	1024				1058
★	CLSG-10002	1000	50	1465.7	7329	564	614	560	432	343	1062
	CLSG-10006		150		21988	664	814				1213
	CLSG-100012		300		43972	814	1114				1439

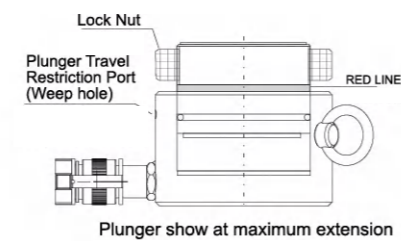
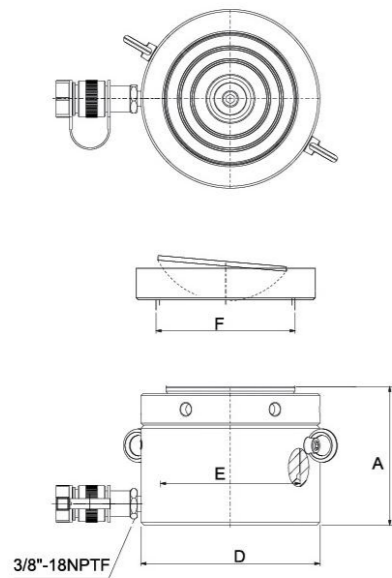
CLP Series Single-acting Low-profile Locking Hydraulic Cylinder

- ▲ Aluminum alloy construction, lightweight & portable
- ▲ 7075-T6 aluminum alloy for maximum capacity with minimum weight
- ▲ Anodized pads and cylinder body for wear resistance and longer service life
- ▲ High-strength spring for fast plunger retraction
- ▲ Multi-layer oil seal design to reduce friction and resist side load damage
- ▲ Top nut prevents plunger over-extension
- ▲ All models supplied with 3/8 NPT quick coupler and dust cap



Handle Type
Optional (O) Standard (S)

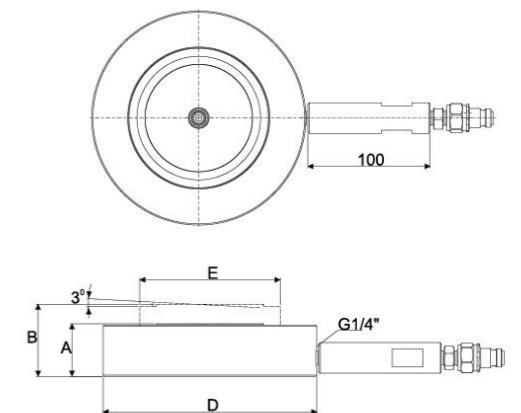
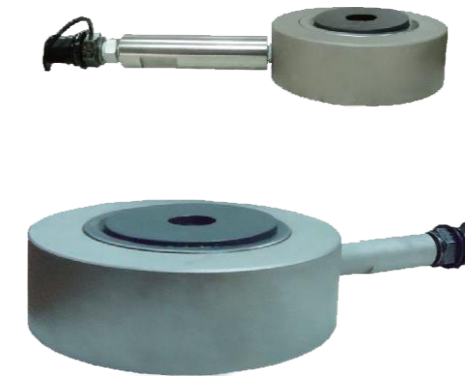
- Welded Handle
- ★ Eye Bolt
- ▲ Folding Handle
- Threaded Folding Handle



Handle Type (S)	Model	Ton (t)	Stroke (mm)	Pressure Area (cm ²)	Oil Volume (cm ³)	Closed Height A(mm)	Extended Height (mm)	Outer Dia. D(mm)	Inner Dia. E(mm)	Ram Dia. F(mm)	Weight (kg)
★	CLP602	60	50	86.6	432	125	175	140	105	96	16.5
★	CLP1002	100	50	146.8	732	137	187	175	136.7	126	28.5
★	CLP1602	160	45	231.3	1040	148	193	220	171.6	160	48.5
★	CLP2002	200	45	285.6	1285	155	200	245	190.7	180	62.5
★	CLP2502	260	45	366.8	1650	159	204	275	216.1	200	81.5
★	CLP4002	400	45	559.9	2519	178	223	350	266.9	250	147.5
★	CLP5002	520	45	730.6	3287	192	237	400	305	290	208

SMC Series Ultra-high Pressure Single-acting Ultra-thin Hydraulic Cylinder

- ▲ Ultra-slim & compact, portable with obstruction-free operation
- ▲ Ultra-slim flat design, ideal for applications unsuitable for standard cylinders
- ▲ Precision height adjustment with accuracy up to 0.01 mm
- ▲ High-strength alloy steel for improved service life and strength
- ▲ Self-locking system maintains load for a long time after pump removal



Model	Ton (t)	Stroke (mm)	Pressure Area (cm ²)	Oil Volume (cm ³)	Closed Height A(mm)	Extended Height (mm)	Outer Dia. D(mm)	Inner Dia. E(mm)	Ram Dia. (mm)	Weight (kg)
SMC100-10	100	10	50.2	50	41	51	120	80	80	3.5
SMC100-15	100	15	50.2	75	46	61	120	80	80	3.9
SMC150-10	150	10	78.5	79	41	51	150	100	100	5.7
SMC150-15	150	15	78.5	118	46	61	150	100	100	6.1
SMC200-10	200	10	103.8	104	43	53	175	115	115	8.1
SMC200-15	200	15	103.8	156	48	63	175	115	115	8.5
SMC200-20	200	20	103.8	208	53	73	175	115	115	9
SMC300-10	300	10	153.9	154	47	57	210	140	140	12.8
SMC300-15	300	10	153.9	231	52	67	210	140	140	13.2

CLRG Series Double-acting High-tonnage Hydraulic Cylinder

- ▲ CLRG Series equipped with base mounting holes
- ▲ Double-acting hydraulic push and pull return
- ▲ Hard chrome-plated piston rod, wear and corrosion resistant
- ▲ Oil return circuit fitted with safety valve to prevent overpressure damage
- ▲ Replaceable groove block as standard accessory
- ▲ Dust ring reduces contamination adhesion
- ▲ Powder-coated surface for good appearance, corrosion and rust resistance
- ▲ All models include 3/8 NPT quick coupler and dust cap



70 Mpa

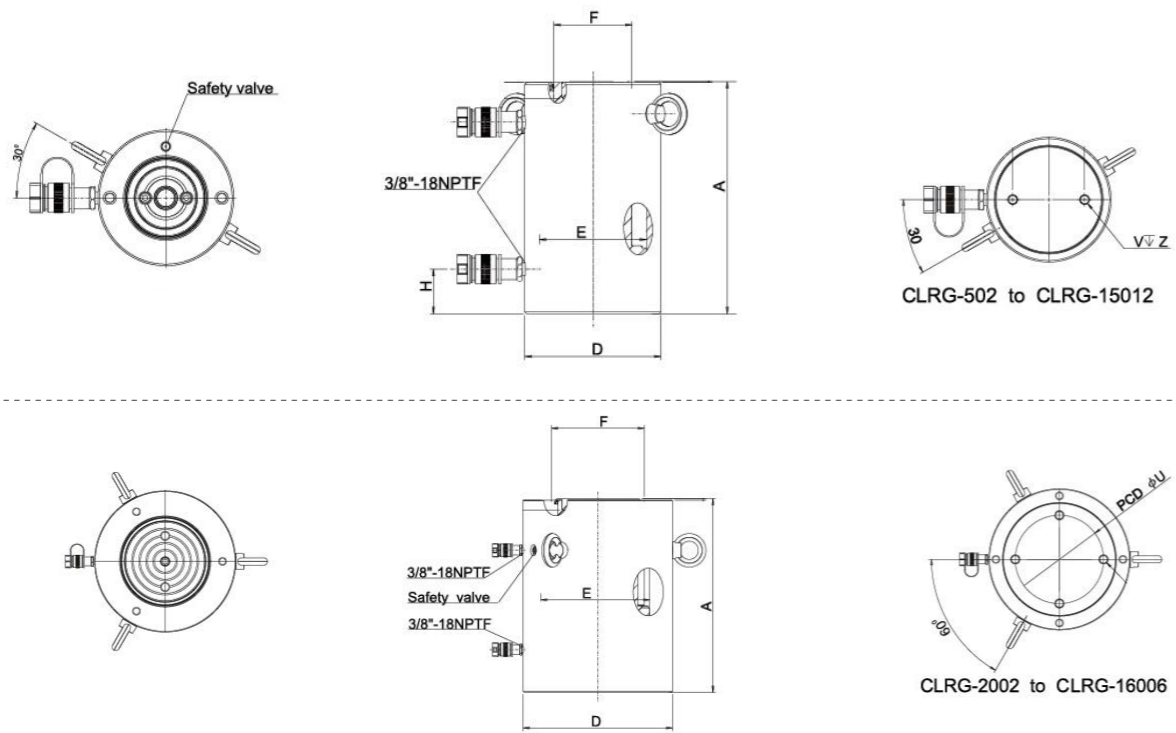


Handle Type
Optional (O) Standard (S)

- Welded Handle
- ★ Eye Bolt
- ▲ Folding Handle
- Threaded Folding Handle

Hydraulic Cylinder Capacity Selection
Double-acting hydraulic jacks must be used with 4-port valve hydraulic pumps.

Hydraulic Power unit
Hydraulic cylinders above 1000 tons are also custom-manufactured.



Handle Type(S)	Model	Ton (t)	Stroke (mm)	Force (t)		Pressure Area(mm ²)		Oil Volume (cm ³)		Closed Height A (mm)	Extended Height B (mm)	Inner Dia. D (mm)	Outer Dia. E (mm)	Ram Dia. F (mm)	Weight (kg)
				Push	Pull	Push	Pull	Push	Pull						
★	CLRG-502	50	50	539	269	77	38.5	385	192	162	212	130	99	70	17
	CLRG-504		100					770	385	212	312				20
	CLRG-506		150					1155	577	262	412				23
	CLRG-508		200					1540	770	312	512				27
	CLRG-5010		250					1924	962	362	612				31
	CLRG-5012		300					2309	1155	412	712				34
★	CLRG-1002	100	50	929	433	132.7	61.9	664	309	179	229	165	130	95	29
	CLRG-1004		100					1327	619	229	329				34
	CLRG-1006		150					1991	928	279	429				40
	CLRG-1008		200					2655	1237	329	529				46
	CLRG-10010		250					3318	1546	379	629				53
	CLRG-10012		300					3982	1856	429	729				59
★	CLRG-1502	150	50	1390	675	198.6	61.9	993	482	196	246	205	159	114	39
	CLRG-1504		100					1986	965	246	346				52
	CLRG-1506		150					2978	1447	296	446				65
	CLRG-1508		200					3971	1930	346	546				78
	CLRG-15010		250					4964	2412	396	646				92
	CLRG-15012		300					5957	2895	446	745				105
★	CLRG-2002	200	50	1861	889	265.9	127	1330	635	212	262	235	184	133.1	55
	CLRG-2006		150					3989	1905	312	462				91
	CLRG-20012		300					7977	3809	462	762				146
★	CLRG-2502	250	50	2565	1068	366.4	152.6	1832	763	235	285	275	216	165.1	89
	CLRG-2506		150					5497	2289	335	485				136
	CLRG-25012		300					10993	4578	485	785				207
★	CLRG-3002	300	50	3193	1060	456.2	151.4	2281	757	322	372	310	241	197.1	184
	CLRG-3006		150					6843	2270	422	572				232
	CLRG-30012		300					13685	4541	572	872				303
★	CLRG-4002	400	50	3919	1354	559.9	193.5	2800	967	374	424	350	267	216	270
	CLRG-4006		150					8399	2902	474	624				330
	CLRG-40012		300					16797	5804	624	924				421
★	CLRG-5002	500	50	5114	1733	730.6	247.6	3653	1238	419	469	400	305	248	401
	CLRG-5006		150					10959	3713	519	669				480
	CLRG-50012		300					21918	7427	669	969				599
★	CLRG-6002	600	50	5987	2068	855.3	295.4	4276	1477	429	476	430	330	267	474
	CLRG-6006		150					12829	4431	529	679				565
	CLRG-60012		300					25659	8862	679	979				701
★	CLRG-8002	800	50	8234	2709	1176.3	911.6	5881	1935	484	534	505	387	317	741
	CLRG-8006		150					17644	5806	584	734				868
	CLRG-80012		300					35288	11611	734	1034				1056
★	CLRG-10002	1000	50	10260	3972	1465.7	1136	7329	2709	564	614	560	432	434	1062
	CLRG-10006		150					21986	8126	664	841				1213
	CLRG-100012		300					43972	16252	814	1114				1439
★	CLRG-16006	1600	155	1600	5283	1762.58	538.6	35466	10837	825	980	710	540	450	2400

RAR Series Double-acting Aluminum Alloy Hydraulic Cylinder

- ▲ Aluminum alloy design, lightweight and portable
- ▲ Manufactured from 7075-T6 aluminum alloy for maximum capacity with minimum weight
- ▲ Anodized cylinder body and support block for wear resistance and extended service life
- ▲ High-strength spring for fast piston rod retraction
- ▲ Multi-layer oil seal design reduces metal friction and prevents side-load damage
- ▲ Top nut protects against piston rod over-travel
- ▲ All models include 3/8 NPT quick coupler and dust cap



70 Mpa

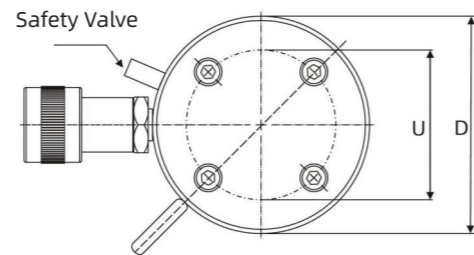
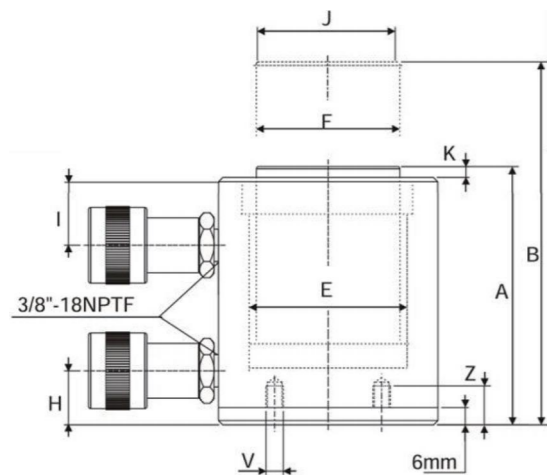


Handle Type
Optional (O) Standard (S)

- Welded Handle
- ★ Eye Bolt
- ▲ Folding Handle
- Threaded Folding Handle

Hydraulic Power Unit
Double-acting hydraulic jacks must be matched with hydraulic power units equipped with 4-port valves.

Hydraulic Cylinder Capacity Selection
Hydraulic cylinders with a capacity exceeding 1000 tons are also available for manufacturing.

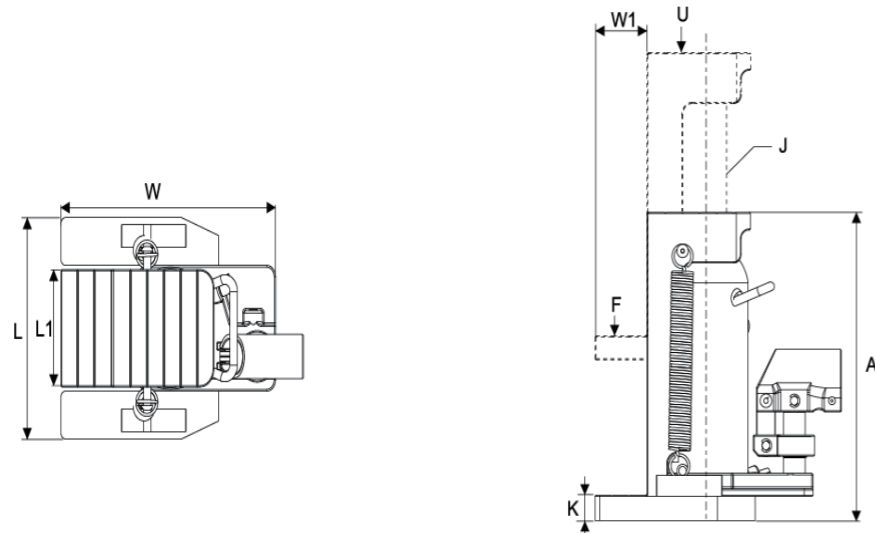


Model	Ton (t)	Stroke (mm)	Force (t)		Pressure Area (mm ²)		Oil Volume (cm ³)		Closed Height A (mm)	Extended Height B (mm)	Inner Dia. D (mm)	Outer Dia. E (mm)	Ram Dia. F (mm)	Bottom Inlet Port Position	Top Inlet Port Position	Spacer Pad Dia. J (mm)	Protrusion Height K (mm)	Weight (kg)
			Push	Pull	Push	Pull	Push	Pull										
RAR-202	20	50	218	130	31.2	18.6	156	93	189	239	113	63	40	30	50	30	3	7.4
RAR-204		100	218	130	31.2	18.6	312	186	239	339	113	63	40	30	50	30	3	8.0
RAR-206		150	218	130	31.2	18.6	468	279	289	439	113	63	40	30	50	30	3	8.6
RAR-208		200	218	130	31.2	18.6	624	372	339	539	113	63	40	30	50	30	3	9.2
RAR-2010		250	218	130	31.2	18.6	780	465	389	639	113	63	40	30	50	30	3	9.8
RAR-302	30	50	309	171	44.2	24.5	221	123	201	251	125	75	50	30	55	40	3	8.6
RAR-304		100	309	171	44.2	24.5	442	245	251	351	125	75	50	30	55	40	3	9.5
RAR-306		150	309	171	44.2	24.5	663	368	301	451	125	75	50	30	55	40	3	10.4
RAR-308		200	309	171	44.2	24.5	884	490	351	551	125	75	50	30	55	40	3	11.3
RAR-3010		250	309	171	44.2	24.5	1105	613	401	651	125	75	50	30	55	40	3	12.2
RAR-502	50	50	496	187	70.9	26.7	354	134	201	251	145	95	75	30	56	50	3	11.1
RAR-504		100	496	187	70.9	26.7	709	267	251	351	145	95	75	30	56	50	3	12.7
RAR-506		150	496	187	70.9	26.7	1063	401	301	451	145	95	75	30	56	50	3	14.3
RAR-508		200	496	187	70.9	26.7	1417	534	351	551	145	95	75	30	56	50	3	15.9
RAR-5010		250	496	187	70.9	26.7	1771	668	401	651	145	95	75	30	56	50	3	17.5
RAR-1002	100	50	1002	556	143.1	79.5	715	398	251	301	185	135	90	43	80	75	3	16.4
RAR-1004		100	1002	556	143.1	79.5	1431	795	301	401	185	135	90	43	80	75	3	19.3
RAR-1006		150	1002	556	143.1	79.5	2147	1193	351	501	185	135	90	43	80	75	3	22.2
RAR-1008		200	1002	556	143.1	79.5	2863	1590	401	601	185	135	90	43	80	75	3	25.1
RAR-10010		250	1002	556	143.1	79.5	3578	1988	451	701	185	135	90	43	80	75	3	28.0
RAR-1502	150	50	1589	924	227	132	1135	660	248	298	230	170	110	38	75	113	3	24.2
RAR-1504		100	1589	924	227	132	2270	1320	298	398	230	170	110	38	75	113	3	28.9
RAR-1506		150	1589	924	227	132	3405	1980	348	498	230	170	110	38	75	113	3	33.2
RAR-1508		200	1589	924	227	132	4540	2610	398	598	230	170	110	38	75	113	3	37.9
RAR-15010		250	1589	924	227	132	5675	3300	448	698	230	170	110	38	75	113	3	42.6

Handle Type (S): ■ Threaded Folding Handle

SL Series Manual Claw-type Hydraulic Jack

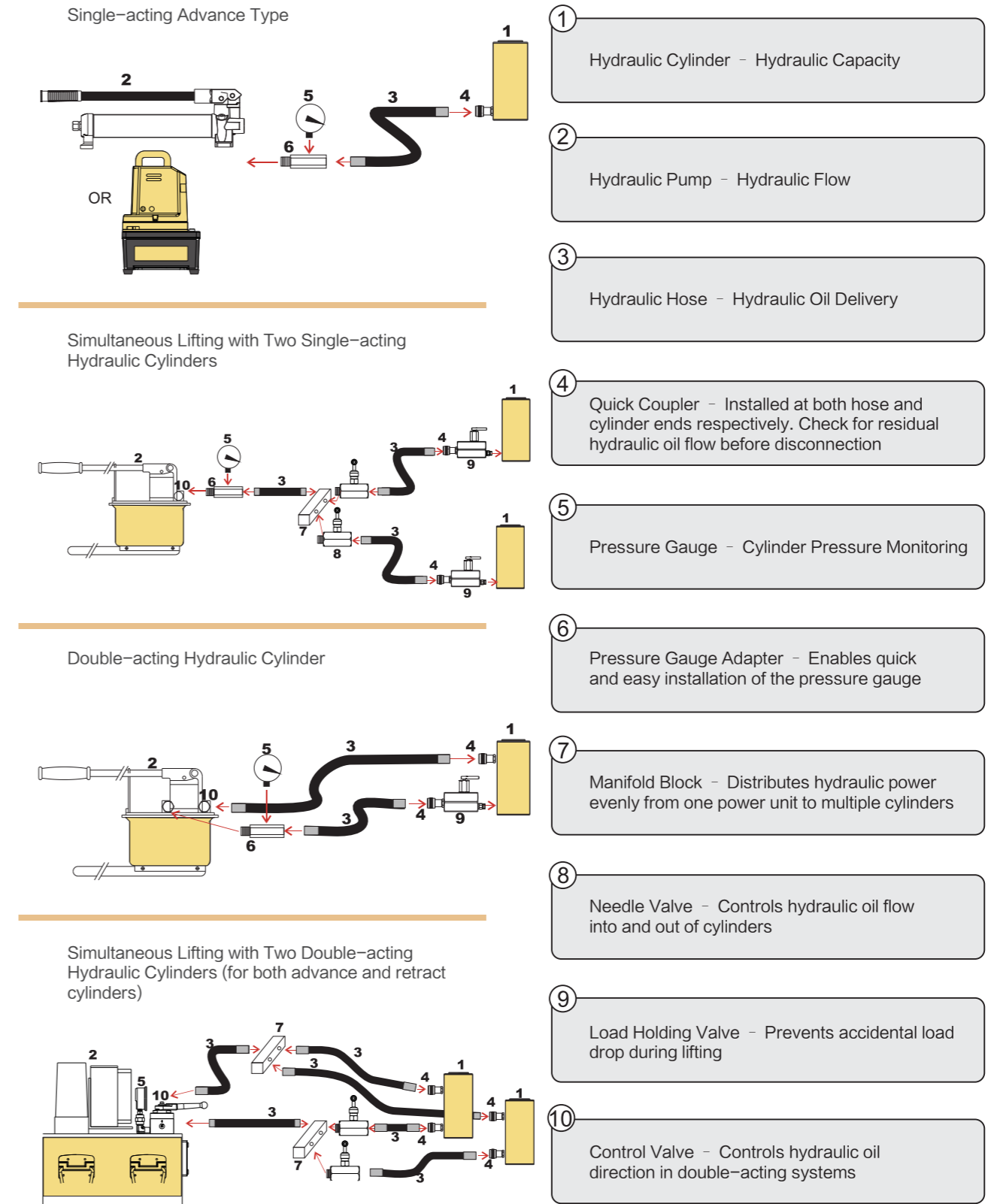
- ▲ Carbon steel base with automated welding for stable quality
- ▲ Alloy steel piston rod with chrome plating, durable and rust-resistant
- ▲ Suitable for leveling lifting machinery and working in confined spaces



Model	Top Load	Claw Load	Stroke (mm)	Body Height	Extended Height	Piston Rod Dia. J (mm)	Base Size LxW (mm)	Claw Height K (mm)	Claw Block Size LxW (mm)	Weight (kg)
	U (t)	F (t)		A (mm)	B (mm)					
SL-05S	5	2.5	117	228	345	29	130x125	16	69x45	8.5
SL-10S	10	5	147	282	429	42	235x186	22	98x53	20
SL-20S	20	10	152	310	462	55	251x241	25	123x60	31.5
SL-30S	30	15	155	330	485	62	273x262	28	149x60	44
SL-50S	50	25	155	370	528	85	280x340	40	190x75	88.5

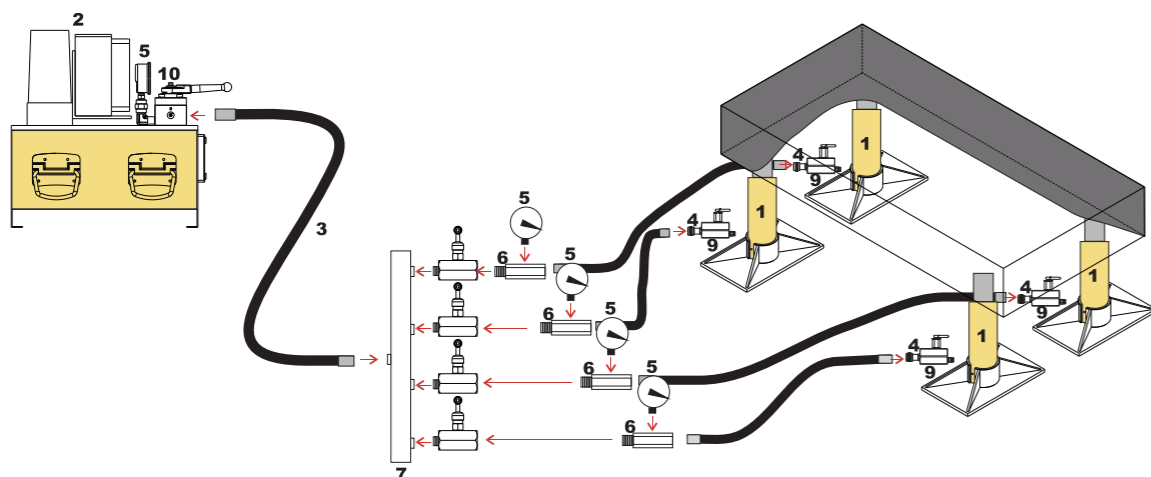
Synchronized Lifting

The following examples are a small number of standard hydraulic combinations. Different matching variations are available depending on needs. For example, differences in operating pressure, lift height, service functions, or maintenance types. A variety of hydraulic pumps can be matched for use as well.

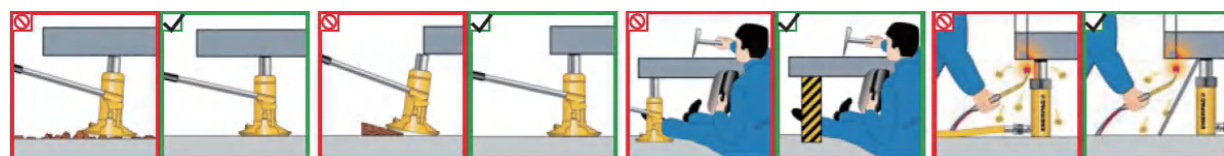


Synchronized Lifting

Single-acting Synchronized Lifting System



Safety Instructions



Provide a level and solid support for the entire jack base.

The entire jack saddle must be in full contact with the load. The load's movement direction must align with the jack plunger.

Never position any part of your body beneath the load. Before accessing the area under the load, confirm it is securely supported on solid structures.

Keep hydraulic equipment away from open flames and high temperatures exceeding 65°C.

Hydraulic Basic Theory

To determine the required tonnage of a hydraulic cylinder during operation, after accounting for the resistance loss of the packing seal and the support resistance loss between the cylinder and piston, the actual output force is 94%-95% of the rated value. For strict and continuous operation, it is recommended to select a cylinder with a higher tonnage than the load, typically calculated at 70%-80% of the rated capacity.

Force: The force generated by a hydraulic cylinder equals the hydraulic pressure multiplied by the effective area of the cylinder.

$$\text{Force (F)} = \text{Hydraulic Pressure (P)} \times \text{Effective Cylinder Area (A)}$$

(This formula can be used to calculate the third parameter when two of the parameters are known)

Required Oil Volume of the Hydraulic Cylinder

The required oil volume of a hydraulic cylinder equals the effective area of the cylinder multiplied by the stroke.

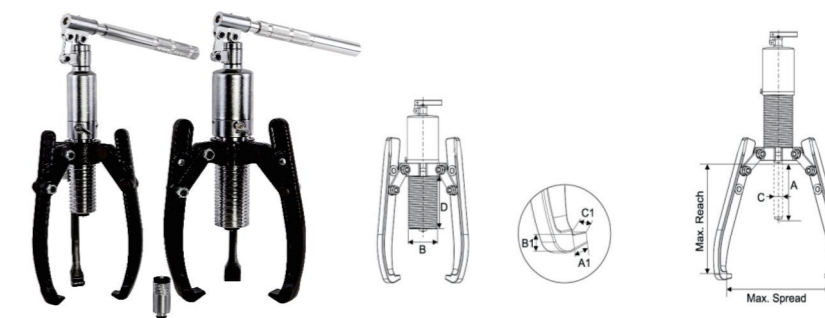
$$\text{Cylinder Oil Volume} = \text{Effective Cylinder Area (A)} \times \text{Stroke}$$

Note:

These are only theoretical examples and are not suitable for calculations involving high-pressure oil, as the volume change of oil under high pressure cannot be ignored.

Three Jaws Hydraulic Puller

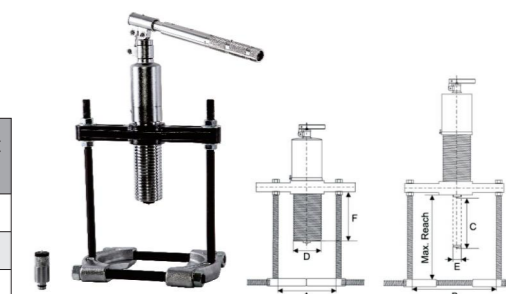
- ▲ High strength alloy steel forged
- ▲ Four sections foldable and removable handle, easy to operate
- ▲ 360° swivel seat
- ▲ Puller body is equipped with a safety valve
- ▲ Hydraulic cylinder hard chrome treatment to strengthen hardness
- ▲ Claw load is more than 120% of the rated load



Model	Force(t)	Stroke (A)(mm)	Pressure Area (cm ²)	Claw Depth (mm)	Claw Distance (mm)	Top(mm)			Claw End(mm)			Weight (kg)
						B	C	D	A1	B1	C1	
HSP-600	6	70	8.04	245	330	45	23	91	13	10	22	6.2
HSP-800	8	85	11.34	230	350	55	26	112	11	10	25	8.2
HSP-1200	12	85	14.45	260	375	60	28	118	14	10	29	9.5
HSP-2000	20	111	28.26	350	520	80	40	162	20	27	33	34.5
HSP-3000	30	111	42	435	550	98	50	155	20	27	38	36

Two Jaws Hydraulic Puller

Model	Force (t)	Stroke (A)mm	Claw Depth (mm)	Claw Distance(mm)		Top(mm)			Weight (kg)
				A	B	D	E	F	
HSP-610	6	70	270	95	180	45	23	92	11
HSP-810	8	85	270	95	220	50	25	122	14.3
HSP-1210	12	85	381	120	290	60	28	118	23.8



Pulling Sets

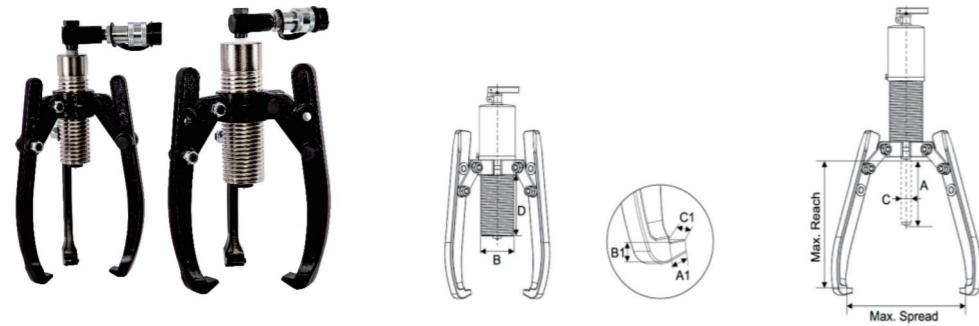
- ▲ High strength alloy steel forged
- ▲ Surface chrome-plating, heat treatment, rust proof treatment to increase service life

Model	Stretch Range(C)mm	Bolt (E)mm	Weight (kg)
BT-9000	30-50	3/8"-24T-L120mm	14
BT-9005	50-70	1/2"-20T-L135mm	18
BT-9015	75-105	5/8"-18T-L165mm	26
BT-9025	105-150	3/4"-16T-L275mm	25
BT-9035	150-200	1"-12T-L350mm	20



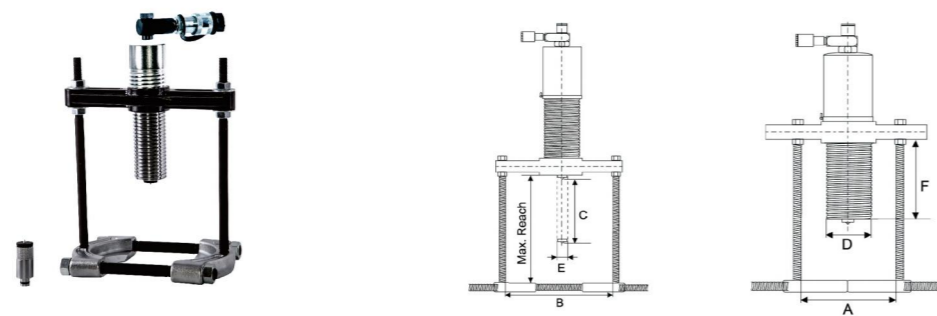
Separated Three-jaw Hydraulic Puller

- ▲ High strength alloy steel forged
- ▲ Four foldable and removable handles for easy operation
- ▲ 360° swivel seat
- ▲ Puller body is equipped with a safety valve
- ▲ Hydraulic cylinder hard chrome treatment to strengthen hardness
- ▲ Center nut spring can bear load easy to use
- ▲ 2/3 claw top collar surface blackened, durable use and rust proof
- ▲ Heat-treated alloy steel forging connection bolt and surface blackened claw, prevent rust, increase service life
- ▲ Claw load is more than 120% of the rated load



Model	Force(t)	Stroke (A)mm	Pressure Area (cm ²)	Claw Depth (mm)	Claw Distance (mm)	Top (mm)			Claw End (mm)			Weight (kg)
						B	C	D	A1	B1	C1	
ESP-600	6	70	8.04	245	330	45	23	91	13	10	22	5.5
ESP-800	8	85	11.34	230	350	55	26	112	11	10	25	7.5
ESP-1200	12	85	14.45	260	375	60	28	118	14	10	29	9.5
ESP-2000	20	111	28.26	350	520	80	40	162	20	27	33	23.5
ESP-3000	30	111	42	435	550	98	50	155	20	27	38	34

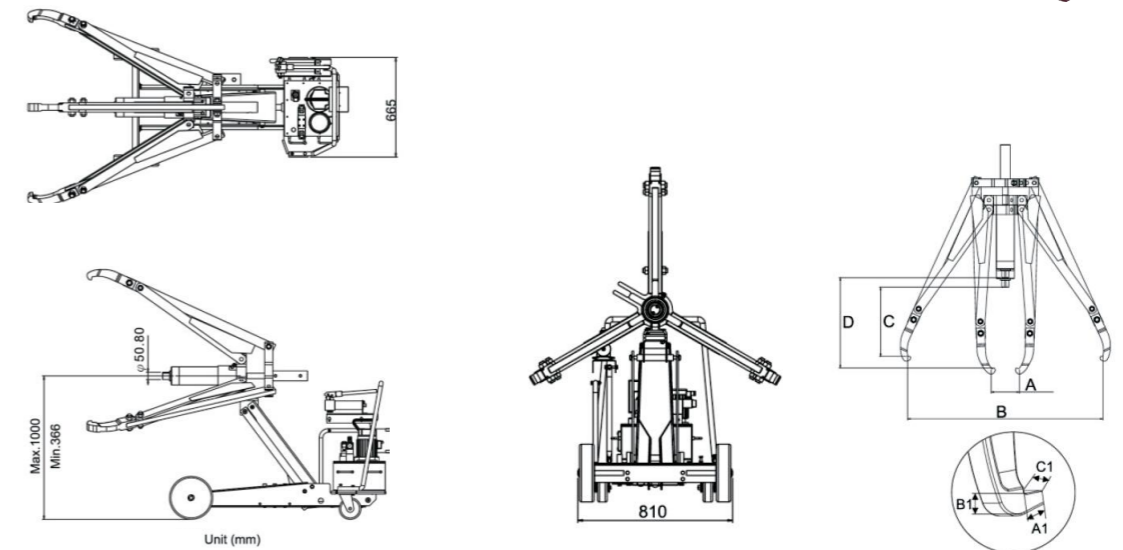
Separated Two-jaw Hydraulic Puller



Model	Force(t)	Stroke (A)mm	Claw Depth (mm)	Claw Distance(mm)		Top(mm)			Weight (kg)
				A	B	D	E	F	
ESP-810	8	85	270	95	220	50	25	122	22.2
ESP-1210	12	85	381	120	290	60	28	118	29.5

Vehicle-mounted Hydraulic Puller

Automatic Manual Lifting Puller (PH Series 3-jaw Self-Centering Vehicle-Mounted Puller, 100T Self-Centering Synchronous Vehicle-Mounted Puller) Consists of integrated puller, quick-connect bracket, and horizontal jack lifting & moving device. Fully automatic hydraulic design for automatic lifting, clamping and pulling. Features easy adjustment, convenient movement and safe operation.

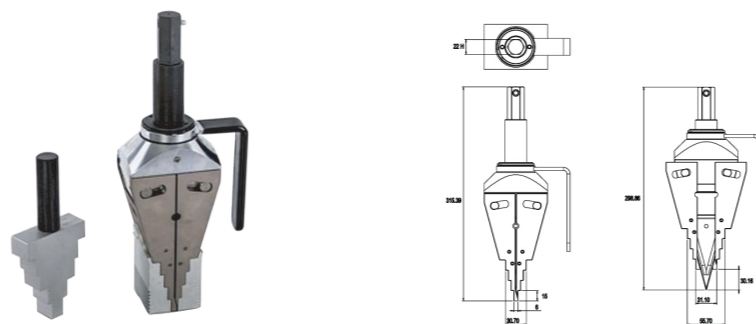


Model	Capacity (t)	Opening	Pulling Depth	Center Height	Cylinder Stroke	Cylinder Force	Three-phase Power Source	Overall Length (mm)
		(mm)	(mm)	(mm)	(mm)	(mm)		
LA50337	50	100~1220	178~381	450~1120	337	50	380V	2286
LA50L337	50	64~1150	559~651	450~1120	337	50	380V	2590

SWR-8 Hydraulic Flange Spreader

- ▲ Only 0.24 (6mm) gap
- ▲ No first-step bending and anti-slip design
- ▲ Automatic retraction

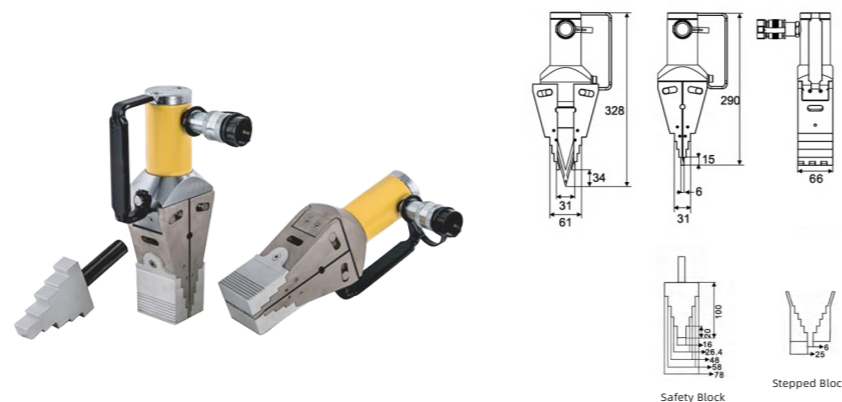
Model	SWR-8
Stretch Force	8t (72kN)
Top Gap	6mm
Stretch Distance	81mm
Weight	6.5kg



SWR-40 Hydraulic Flange Spreader

- ▲ Only 0.24 (6mm) gap
- ▲ No first-step bending and anti-slip design
- ▲ Automatic retraction

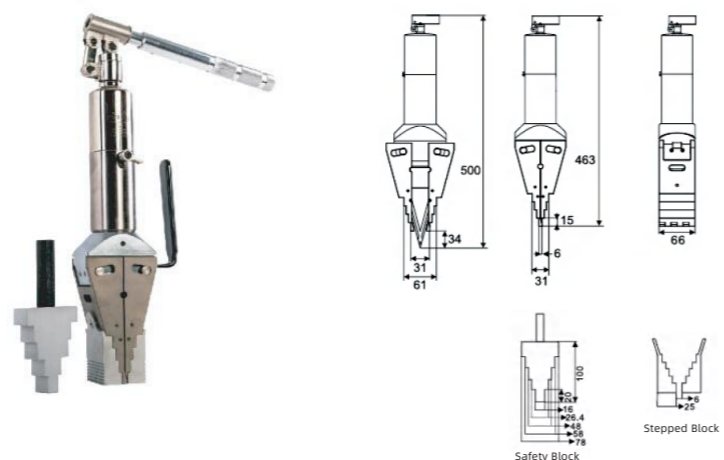
Model	SWR-40
Stretch Force	14t (125kN)
Top Gap	6mm
Stretch Distance	81mm
Oil Requirement	78cm ³
Weight	7.1kg



SWR-401 Hydraulic Flange Spreader

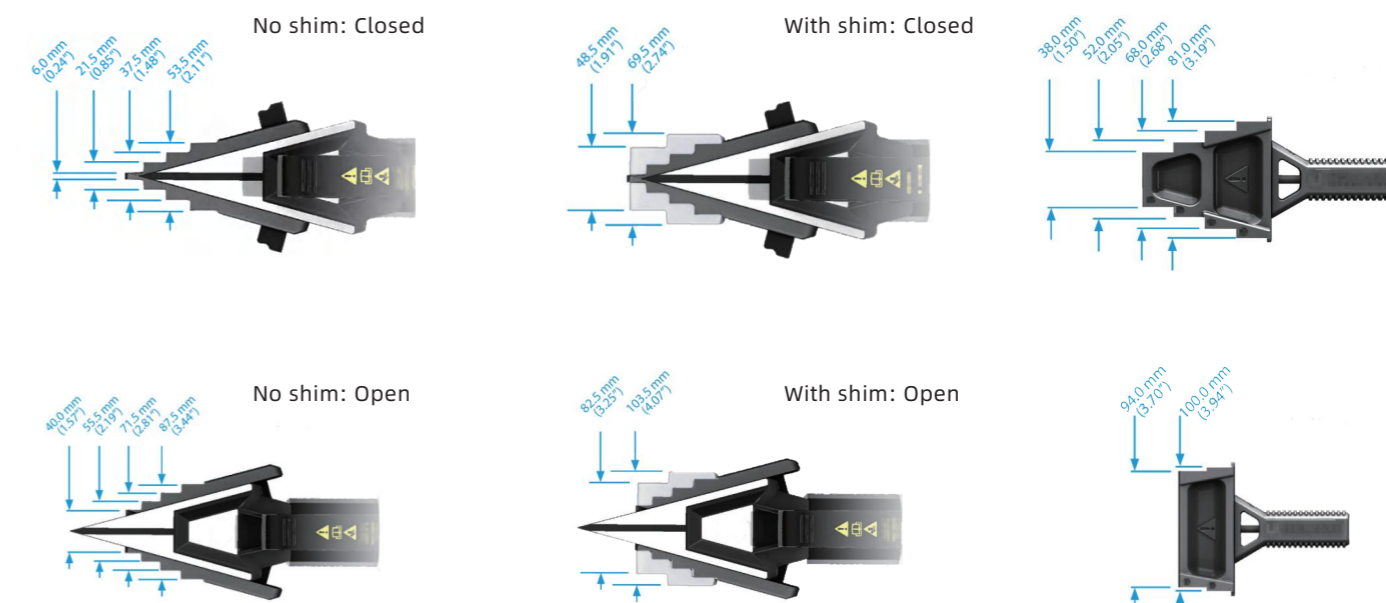
- ▲ Only 0.24 (6mm) gap
- ▲ No first-step bending and anti-slip design
- ▲ Automatic retraction

Model	SWR-401
Stretch Force	15t (134kN)
Top Gap	6mm
Stretch Distance	81mm
Oil Requirement	152cm ³
Weight	8.0kg



Split-type Flange Spreader 24T

- ▲ 360° rotating high-strength plastic handle: Rotates around the tool's central axis for easy vertical/horizontal alignment and convenient carrying
- ▲ Detachable handle for better performance
- ▲ Scale design for intuitive visual monitoring of the flange separation stroke
- ▲ Key components adopt forging process for enhanced strength and reliability
- ▲ Narrow jaw design to reduce tool wear
- ▲ Optimized structure with quickly replaceable jaws and wedge plates for improved work efficiency

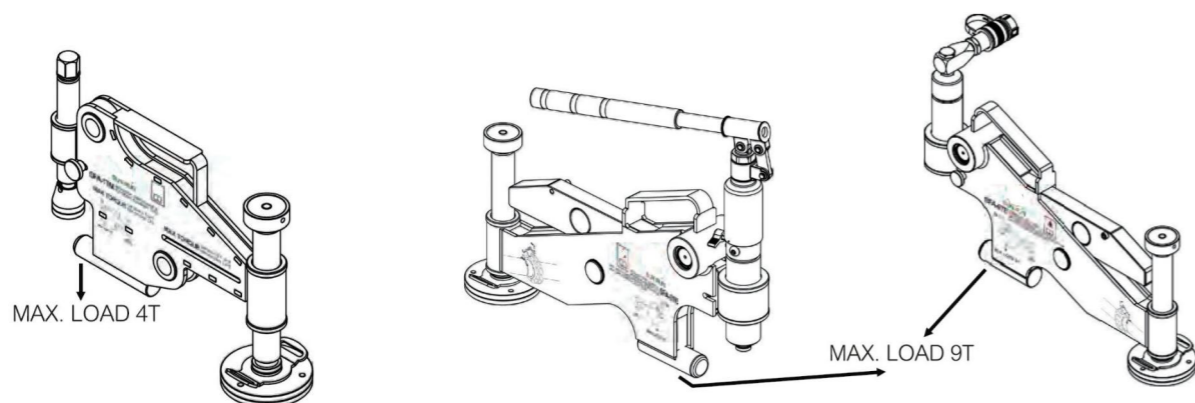
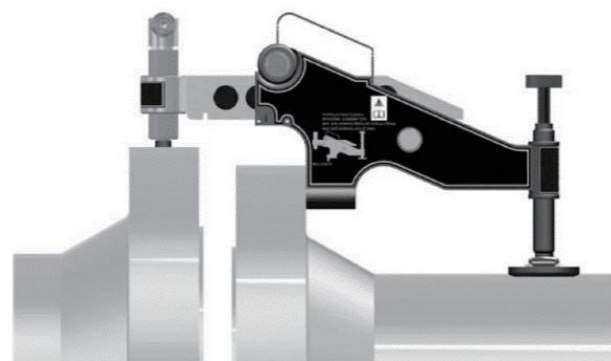


Model / Specification

Model	Max Spreading Force (t)		Spreading Distance (mm)			Configuration	Size (mm)	Weight (kg)
	1st Stage	4th Stage	1st Step	Stage 1 - No Shim	Stage 2 - With Shim			
SHF-25						Single-head Flange Spreader: Includes shim, hex key, safety sling; Net weight: 6.4kg	580x330x165	11.6
SHF-25S	20	24	6-40	6-87.5	48.5-103.5	1-to-1 Configuration: Manual pump, single-head flange spreader, pressure gauge & accessories, 2m hydraulic hose, shim, hex key, safety sling	920x500x205	20.7
SHF-25D						Manual pump, double-head flange spreader, pressure gauge & accessories, 2m hydraulic hose, shim, hex key, safety sling	920x500x205	33

FSA Series Flange Straightener

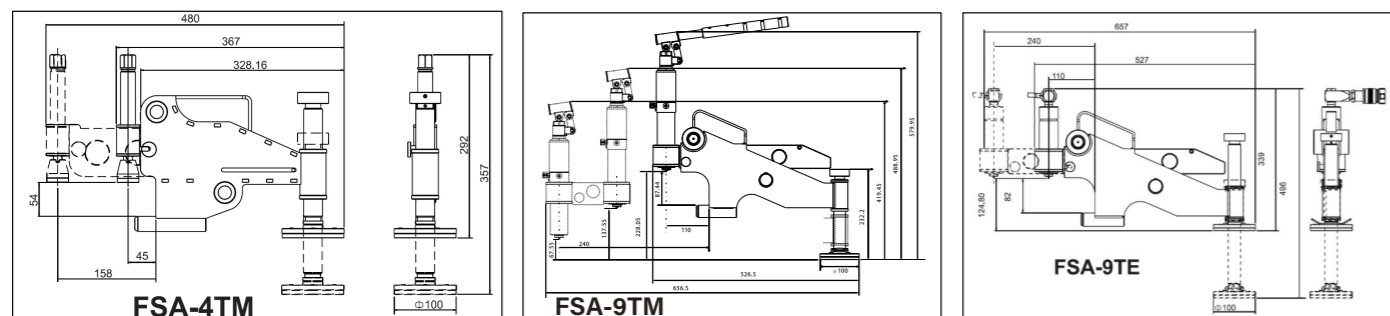
- ▲ Suitable for alignment and realignment of pipeline flanges during routine maintenance
- ▲ Attaches to misaligned flanges for easy push-pull operation to achieve proper alignment
- ▲ Safely and quickly corrects misalignment without external power support
- ▲ Compatible with most ANSI, API, BS and DIN standard flanges
- ▲ Eliminates need for slings, hooks or hoisting gear assistance
- ▲ Operable in any orientation (horizontal/vertical installation)
- ▲ Lightweight, portable design for easy handling in outdoor operations



FSA-4TM
Medium-sized flanges:
Mechanical fixation

FSA-9TM
Large-sized flanges:
Mechanical fixation

FSA-9TE
Large-sized flanges:
Hydraulic fixation



Model	Max Lifting Force (kN/t)	Min Bolt Size (in/mm)	Flange Thickness (incl. flange) (in/mm)	Weight (kg)
FSA-4TM	40/4	0.95/24	1.18-5.23/30-133	8.6
FSA-9TM	90/10	1.24/31.5	3.66-9.00/93-228	16.5
FSA-9TE	90/10	1.24/31.5	3.66-9.00/93-228	16.5

P Series Ultra-High Pressure Manual Pump

- ▲ Made of aerospace-grade Al-Ti alloy, featuring lightweight, high strength, corrosion & impact resistance, suitable for various harsh environments
- ▲ Dual-speed operation with built-in precision automatic high-low pressure switching valve; delivers higher flow at low pressure, saving operation time and improving work efficiency



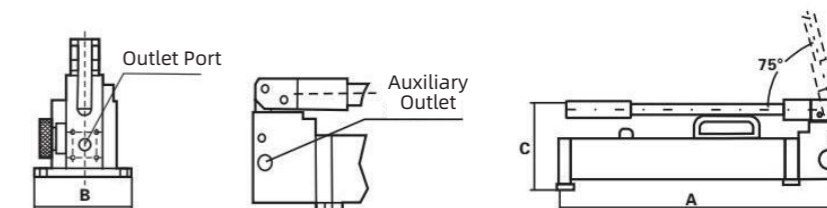
70-400 Mpa



Model	Working Pressure (MPa)		Output Oil Volume (cm ³)		Oil Tank Capacity (cm ³)	Output Oil Volume (cm ³)	Handle Force (N)	Overall Dimensions (mm)	Outlet Port	Pressure Gauge Port	Weight (kg)
	Low Pressure	High Pressure	Low Pressure	High Pressure							
MHP392	2.5	70	32	2.5	1670	1440	300	577x120x170	3/8" NPT	1/4" NPT	6.3
MHP80	2.5	70	32	2.5	2259	1980	300	577x120x170	3/8" NPT	1/4" NPT	8
MHP160	2.5	70	32	2.5	3580	3240	300	577x140x190	3/8" NPT	1/4" NPT	10
MHP462	2.5	70	32	2.5	6480	5860	350	577x220x190	1/4" BSP	1/4" NPT	14.5
16MHP392	1.5	100	32	2.5	1670	1440	350	577x120x170	1/4" BSP	1/2" BSP, 1/4" NPT	6.3
16MHP80	1.5	100	32	2.5	2259	1980	350	577x120x170	1/4" BSP	1/2" BSP, 1/4" NPT	8
16MHP160	1.5	160	32	2.5	3580	3240	350	577x140x190	1/4" BSP	1/2" BSP, 1/4" NPT	10
20MHP392	1.5	200	32	0.9	1670	1440	400	577x120x170	1/4" BSP	1/2" BSP	6.3
2MHOP80	1.5	200	32	0.9	2590	1980	400	577x120x170	1/4" BSP	1/2" BSP	8
20MHP160	1.5	200	32	0.9	3580	3240	400	577x140x190	1/4" BSP	1/2" BSP	10
28MHP80	2	280	32	0.9	1670	1980	450	577x120x170	3/4" -16UNF, 14" BSP	1/2" BSP	6.3
40MHP80	2	400	32	0.9	1670	1980	450	577x120x170	3/4" -16UNF, 14" BSP	1/2" BSP	6.3

Pressure Gauge Adapter for P Series Manual Hydraulic Pumps

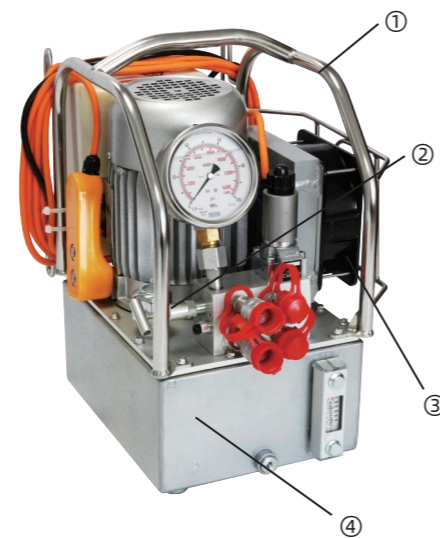
- ▲ Usable Oil Volume: 1.44-5.8 L
- ▲ Max Working Pressure: 70-280 MPa



Model	Working Pressure (MPa)	Inlet / Outlet Port Size	Pressure Gauge Port
GA-3	7	3/8" NPT	1/4" NPT
GA20	20	1/4" BSP	1/2" BSP
GA30	30	3/4" -16unf 60°C	1/2" BSP

HEP-700 Special Electric Pump For Torque Wrench

- ▲ Three kinds of pressure, three kinds of flow output automatic switch, maximize efficiency
- ▲ Standard configuration drives two hydraulic wrenches (Also can be configured to drive four wrenches at the same time)
- ▲ Aluminum and titanium alloy manufacturing tank and pump, light weight, easy to carry
- ▲ Φ100 high density pressure gauge, ensuring higher torque accuracy
- ▲ Adjust the output pressure freely in the range of 40-700 bar
- ▲ With a radiator, can work continuously for 24 hours
- ▲ A variety of voltage / frequency motors available upon request

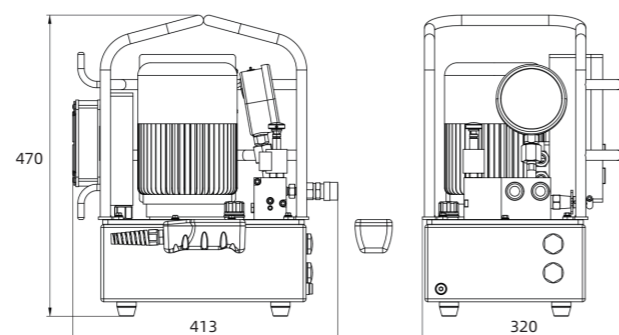


- ① Al metal frame, easy to carry, protect machine body
- ② External pressure regulator, built-in relief valve protection
- ③ System pressure release button, release pressure when pump stopped and power failure.
- ④ Lightweight design body, reducing weight, easy to carry

Model	HEP-700	
Power Source	AC power	
Tank Capacity	8L	
Oil Flow	Low Pressure	7L/min
	Medium Pressure	1.6L/min
	High Pressure	0.8L/min
Output Pressure	40-700bar	
Input Power Supply	220V/50Hz	
Power	1.1kW	
Weight	26.7kg	

REH-200R Special Electric Hydraulic Pump For Bolt Stretcher

- ▲ Light weight, easy to carry
- ▲ With remote control handle, safe and easy to operate
- ▲ With high precision pressure gauge for accurate pressure regulation
- ▲ Buckle type quick joint, connection is quick and convenient
- ▲ Two-stage plunger pump, compact structure, solid and reliable
- ▲ Optional high performance radiator, to ensure continuously work for a long time
- ▲ Single and double action optional, suitable for various application
- ▲ Motor power 1.5kW, strong power, large flow
- ▲ Suitable for bolt stretcher, also for wind power, ships and other industries



Model	REH-200R
Oil Delivery at High Pressure	0.4L/min
Oil Delivery at Low Pressure	2.2L/min
High Pressure	150Mpa
Low Pressure	10Mpa
Motor Power	1.1kW
Reservoir Capacity	6L
Input Power Supply	220V/50Hz
Net Weight	28kg
Dimensions	413x320x470 mm

REW-700 Air Pump For Torque Wrench

- ▲ Maximum working pressure 700bar
- ▲ Input gas source 4-8bar
- ▲ Three-stage flow rate design, flow rate automatic switching, high working efficiency
- ▲ No electronic control system, can be used in explosion-proof applications
- ▲ Aluminum fuel tank, light weight, external cooling system, can work for a long time
- ▲ Optional 4 wrenches working at the same time

Model	REW-700	
Tank Capacity	6L	
Flux	Low Pressure	8L/min
	Medium Pressure	1.7L/min
	High Pressure	0.85L/min
Power	3kW	
Pressure	Low Pressure	7MPa
	Medium Pressure	28MPa
	High Pressure	70MPa
Input Air Source	4-8bar	
Input Interface	NPT 1/4	
Weight	22kg	



RI-M200 Intelligent Electric Hydraulic Tension Pump

- ▲ High-performance servo motor: powerful, pressure-start capable.
- ▲ Dual-stage flow design for higher efficiency.
- ▲ Imported high-quality core components: reliable quality, superior performance.
- ▲ Aluminum oil tank for lightweight design.
- ▲ External cooling system enables long-term continuous stable operation.
- ▲ High-sensitivity display + PLC algorithm control for precise and reliable torque control.
- ▲ Optional fully automatic mode with automatic pressure compensation.
- ▲ Construction record storage; exportable data for easy traceability and management.
- ▲ Standard integrated electric control handle for remote pressure adjustment.
- ▲ Optional wireless remote control handle for more convenient and flexible operation.

Model	RI-M200
Oil Delivery at High Pressure	0.4L/min
Oil Delivery at Low Pressure	2.2L/min
High Pressure	150Mpa
Low Pressure	10Mpa
Motor Power	1.5kW
Reservoir Capacity	6L
Input Power Supply	220V/50Hz
Net Weight	28kg
Dimensions	530x355x615 mm



